

Freyssinet Menard Northern Emirates LLC
P.O Box 61560, Sharjah, United Arab Emirates
Tel: + 971 6 5598 85
E-mail: fme@freyssinet.sofr.me

Date : 01st February 2017
Ref : FMNE/B/LEB/L001/KD/TK

To : **DEVELOPED STRUCTURES ENGINEERING (DSE)**

Attn. : **Marc Fares**
General Manager

Subject: **To Whom It May Concern**

Dear Sir,

This is to confirm that ***Freyssinet MNE (FMNE)*** will provide ***Developed Structures Engineering (DSE)*** with its Technical Services to insure the proper implementation and application of Freyssinet Post Tensioning system. Freyssinet services will cover the Design, Control of Execution quality and the supply of Freyssinet anchorage system.

Yours faithfully,



Khalil Doghri
General Manager

Freyssinet Gulf LLC

PO Box 36211
Dubai, UAE

Tel: + 971 4 209 4900

Fax: + 971 4 2094910

E-mail: fme@freyssinetme.sofr.me



FREYSSINET
SUSTAINABLE TECHNOLOGY

PREQUALIFICATION DOCUMENTS POST-TENSIONING WORKS (FREYSSINET PT SLAB SYSTEM)



<i>CLIENT</i>	-
<i>CONSULTANT</i>	-
<i>MAIN CONTRACTOR</i>	-
<i>SUB-CONTRACTOR</i>	FREYSSINET GULF LLC

CONTENTS

1. Company Profile
2. Quality Management System Certificates
3. Project Records
 - a. Letter of Recommendations
 - b. List of Projects and References
4. Quality, Health and Safety and Environment Policy
5. Approvals

1.0
COMPANY PROFILE



2013 Profile



FREYSSINET



REINFORCED EARTH



Overview

The Freyssinet Group is committed to the delivery of high value added solutions in its two major fields of expertise: Structures and Soils. Freyssinet is involved in the preparation of innovative solutions in the fields of:

- Civil engineering structures,
- high-rise buildings,
- industrial sites,
- platforms,
- transport infrastructure

The Group is involved in construction, refurbishment and maintenance of all types of building and civil engineering works.

Today it is a group of companies each international benchmark in their specialised field:

Freyssinet, a world leader in prestressing, stay cables and strengthening of structures;

Reinforced Earth, a world leader in MSE (Mechanically Stabilised Earth) walls;

Menard, soil improvement specialists.

Freyssinet today operates through more than 80 subsidiaries in more than 50 countries.

Increasingly involved in sustainable development issues, the Freyssinet Group is stepping up initiatives, to improve environmental protection on construction sites as well as strengthen its policy on social responsibility. Putting people at the core of the organisation, the Freyssinet Group has thus been committed to active steps towards risk prevention and safety.



Freyssinet is a wholly owned subsidiary of Vinci Construction, a world leader in civil engineering.

Key Figures at 31.12.2012:

Revenue:

€38.6 billion

Market Capitalisation:

€20.7 billion

Net Income attributable to
owners of the parent:

€1,917 million

Number of Projects:

265,000

Eugène Freyssinet conceived the idea of prestressing for the first time in 1903. Three years later he issued a paper in which he described the elastic properties of concrete, which had previously only been known for steel. Freyssinet continued to develop the technique between 1903 and 1928 when a patent entitled the "Manufacturing process for reinforced concrete components" was taken out for the prestressing system. The term "prestressing" did not appear until 1932. Freyssinet made a widely publicised demonstration of the advantages of prestressing in 1934, by successfully consolidating the Le Havre shipping terminal.

In 1943, Edme Campenon, Chairman of Entreprises Campenon Bernard, created the STUP (Société Technique pour l'Utilisation de la Précontrainte - Engineering Company for the use of Prestressing), to take over and continue research work initiated by Eugène Freyssinet. STUP's continuing role was to promote prestressing techniques and their applications to clients, to manufacture prestressing equipment and materials, and to provide technical assistance on site. The history of the Freyssinet Group thus includes four main steps.

1.3.1 Promoting techniques OF PRESTRESSING

During the first period between 1943 and 1955, the emphasis was placed on civil engineering design in order to attract potential customers. At the same time, the company began to expand internationally opening offices in Belgium, Germany, the Netherlands, the United Kingdom, Brazil, Italy and Scandinavia. Some of its most significant projects in the period included:

- the bridges over the Marne,
- Caracas viaducts in Venezuela,
- Lake Pontchartrain bridge in the United States,
- Europe No. 1's radio transmitter in Felsberg Germany.

The STUP played an instigating and federating role for prestressing techniques in 1949 and 1950, by organizing prestressing Day Conferences with the assistance of the ASP (Association Scientifique de la Précontrainte - Scientific Prestressing Association). These conferences were attended by Engineers from around the world and were instrumental in the promotion of the technique on the international stage.

1.3.2 Mechanization and internationalization

In the second period between 1954 and 1970, STUP's monopoly on prestressing gradually disappeared and the competition began to become organized. To counteract STUP began an aggressive research and development policy, working on continuously more ambitious projects, requiring greater technical know-how. One of the results of this policy was the full mechanization of site equipment with STUP introducing the first hydraulic tensioning jacks in 1957. At this time in France a new era of project design and construction (design and build) commenced. STUP realizing the potential for growth in this area developed into a specialist sub contractor. This intensifying of national activity made re organization necessary with offices opening in Marseilles, Lille, Nantes, Strasbourg, Lyon, Toulouse and Rambouillet. Major construction projects undertaken during this period included:

- displacement of the Abu Simbel temple in Egypt,
- construction of the Gladesville bridge in Australia,
- Oléron bridge in France,
- Wylfa and Oldbury nuclear power plants in the United Kingdom.

1.3.3 Diversification and major sites

In the third period between 1970 and 1980, STUP began diversifying its activities, particularly into the field of repair of structures. The period was also characterized by very large and prestigious projects including:

- Ekofisk oil platform in the North Sea,
- Brotonne cable stayed bridge in France, the beginning of the French nuclear power program with the construction of about thirty 900 MW power stations
- Montreal Olympic stadium in Canada.

This sustained international activity resulted in the creation of a specialized international department, consolidating the groups presence on all five continents.

In 1976, STUP changed its name to Freyssinet International, marking its international vocation and offering homage to the man whose work it was continuing.

In the fourth period between 1980 and 1999, emphasis was placed on accelerated technical development and innovation. Over the years, Freyssinet has become a key player in the development of technical innovations in the civil engineering field particularly stay cables, prestressing and heavy lifting and moving, and has been involved in many well known projects throughout the world including:

- Normandy bridge in France,
- Vasco de Gama bridge in Portugal,
- Cardiff stadium in the United Kingdom,
- Hibernia offshore oil platform (Newfoundland)
- Ting Kau bridge in Middle East
- Rion Antirion Bridge in Greece
- Millau Viaduct France

1.3.4 A controlled development and an external growth

At the end of the 90's, Freyssinet strengthened its activities through the purchases of specialized companies: Terre Armée Internationale (the world leader in mechanically stabilized earth structures) at the end of 1998, and Menard Company, specialized in soil improvement in September 1999. This last purchase, which follows the successful integration of Reinforced Earth, widens the Group's product range in the soils field, which now represent more than the third of its total activity.

Since 2000, the group has integrated a number of nuclear related service companies in France and the UK, started-up a structures-related business in the United States, illustrated by the supply of the stay cables for the Léonard P. Zakim bridge in Boston, and strengthened its presence in Africa, with subsidiaries in South Africa and Egypt.

Since 2001, the Group has continued to develop close relationships with its customers and to accelerate the process of decentralization of its organizational structure. Implemented by locally-based teams and supported by Department Technical (DT) in Paris, our global expertise brought a number of major projects to a successful conclusion, including:

- prestressing of the Sart canal bridge in Belgium,
- rotation of the Cernavoda bridge in Romania,
- rehabilitation of the Oraison canal in France,
- construction of the Dubai Metro (Redline) in the U.A.E.
- Construction of Reinforced Earth® abutments for the viaducts supporting the extension of the Portland light rail system in the USA.

1.3.5 Freyssinet in the Middle East

Freyssinet has been represented in Middle East since 1970's. Based in Dubai, it has been extending its expertise and services on various projects on all emirates of the United Arab Emirates and the rest of the region.

Self-sustained teams are organized and operate in each country within the region. Its affiliates are namely:

Freyssinet Menard Qatar WLL

(Projects in Qatar)

Freyssinet Middle East LLC

(Projects in the emirate of Abu Dhabi, United Arab Emirates)

Freyssinet Gulf LLC

(Projects in the emirate of Dubai and other gulf countries except Qatar, Oman, Jordan and KSA)

Freyssinet Menard Northern Emirates LLC

(Projects in other emirates of UAE namely: Sharjah, Ajman, Umm Al Quwain, Fujairah and Ras Al Khaimah)

Freyssinet Arabian Sea LLC

(Projects in the Sultanate of Oman)

Freyssinet Menard Saudi Arabia LTD

(Projects in the Kingdom of Saudi Arabia)

Freyssinet Jordan LTD

(Projects in Hashemite Kingdom of Jordan)

1.3.6 FREYSSINET HEAD OFFICE IN DUBAI

Location: 1st Floor, Saraya Avenue Bldg. Block A Al Garhoud, Dubai, United Arab Emirates, P.O. Box 36211

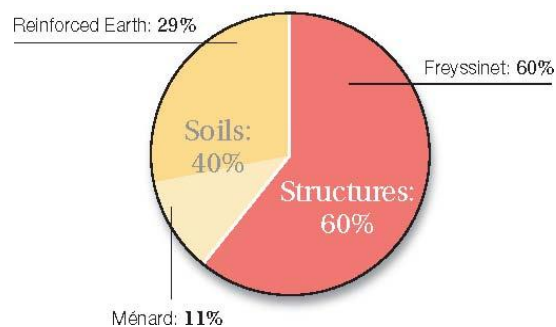
Phone: +971 4 209 4900

Fax: +971 4 209 4910

Web: www.freyssinet.co.ae
www.freyssinet.com

Group 1.4 Key Figures

In 2008, Freyssinet recorded a consolidated turnover of 970 million Euro. The Group has over 80 operating subsidiaries on all five continents, and employs more than 8,287 people.



Turnover By Division (2007)

1.4.1 Freyssinet manpower in the Middle East

Freyssinet in the Middle East as a whole employs more than 300 staff. In 2007, it achieved a combined turnover of 98 Million Dirhams. In 2008, the recorded turnover was 225 Million Dirhams.

1.5 Technical Innovation

Central to the work of Freyssinet, Ménard and Terre Armée, innovation remains a strategic priority of the group, which allocates 1.5% of our turnover to research throughout the world.

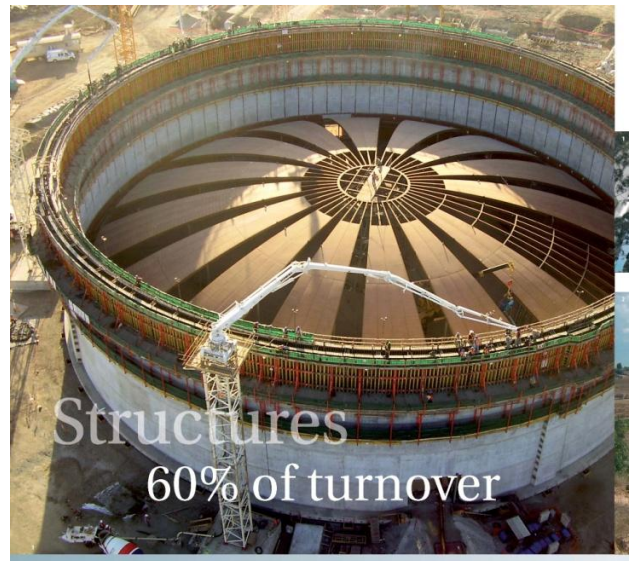
This investment has kept Freyssinet at the forefront of specialist civil engineering and we currently have a portfolio of more than 200 patents obtained in the past 20 years.

1.6 Sustainable Development

In 2006, the group first calculated the CO₂ emissions from its sites (materials and labour), using the carbon count method developed by VINCI Construction. The results showed that the solutions proposed by Freyssinet reduce carbon dioxide emissions compared with traditional techniques, particularly stay cables, with a service life in excess of 100 years; prestressed concrete floors, which use less materials than reinforced concrete floors; Reinforced Earth walls, which represent average annual savings of 1,500,000 T of CO₂ compared with walls cast in-situ; the Menard Vacuum soil atmospheric consolidation process, which reduces CO₂ emissions by a factor of 3 or 4 compared with traditional processes. More generally, the carbon count confirmed the appeal of the group's civil engineering structural repair, strengthening and maintenance solutions in terms of saving natural resources. By preserving and restoring old or under-sized structures using innovative and non-polluting techniques such as cathodic protection or composite material reinforcement, Freyssinet offers clients solutions that will allow them to avoid totally or partly demolishing and then rebuilding their structures. Worldwide, the group is committed to limiting the environmental impact of its activities.



Group 2.1 Freyssinet Activities



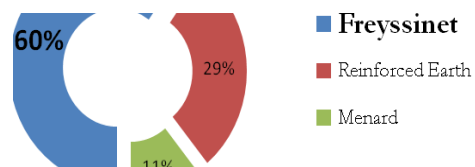
2.1 Structures

Freyssinet operates in the construction, repair and maintenance of all types of structures.

These activities constitute 60% of the group's turnover. These activities may be divided into the following key categories:

- CABLED STRUCTURES
- POST TENSIONING
- HANDLING
- FOREVA

STRUCTURAL FITTINGS



2.1.1 Cable Structures

Over the past thirty years the popularity of cable stayed structural solutions has increased significantly particularly long span cable stayed bridges. This shift in long span bridges away from suspension bridges was in no small part due to the success of the Normandie bridge constructed using Freyssinet HD cables.

Freyssinet is the undisputed world leader in the design, supply and installation of cable stays and vibration control of stayed structures.

The Modern stay cable system is the result of Freyssinet's advances in the field including:

- Freyssinet Monostrand®, individually galvanised, greased and sheathed cable stay strand.
- Freyssinet's Isotension® system which allows the installation and replacement of individual strands within a stay.

Freyssinet stay cable technology leads the world in this form of bridge construction and incorporates decades of experience gained from the design and construction of some of the world's longest span cable stayed bridges



Rion Antirion (Greece)

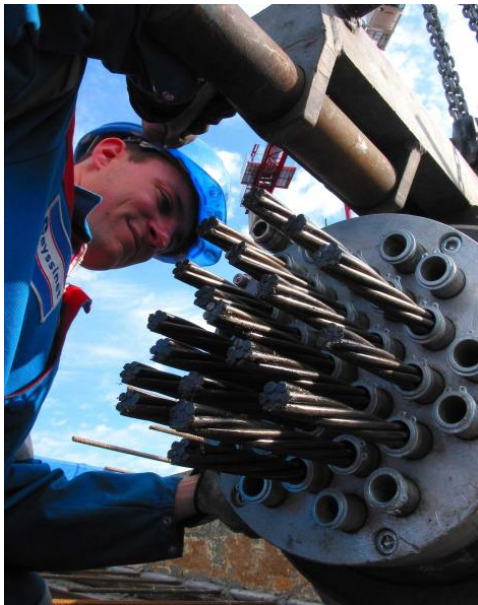
Freyssinet has installed cables on more than 200 bridges worldwide, including the following:

✚	Normandy Bridge	(France)
✚	Elorn Bridge	(France)
✚	Severn Bridge	(U.K.)
✚	Glebe Island	(Australia)
✚	Mescala	(Mexico)
✚	Arade Bridge	(Portugal)
✚	Guadiana Bridge	(Spain)
✚	The Dee Crossing	(U.K.)
✚	Karkistensalmi Bridge	(Finland)
✚	Ting Kau	(Middle East)
✚	Tagus Bridge	(Portugal)
✚	Oresund	(Sweden)
✚	Seohae Grand Bridge	(Korea)
✚	My Thau Bridge	(Vietnam)
✚	Charles River, Boston	(USA)
✚	Cape Girardeau	(USA)
✚	Sungai Prai	(Malaysia)
✚	Aswan Bridge	(Egypt)
✚	Boyne Bridge	(Ireland)
✚	Sungai Muar	(Malaysia)
✚	Rion Antirion	(Greece)
✚	Millau	(France)
✚	Panama 2nd Bridge	(Panama)
✚	Cooper River	(USA)
✚	Bay Chai	(Vietnam)
✚	Cooper river	(USA)
✚	SOBBR	(Thailand)
✚	Orinoco 2 nd crossing	(Venezuela)
✚	Zaraté	(Argentina)

2.1.2 Post Tensioning

Freyssinet is the inventor of post tensioning and has been at the forefront of its development for more than 50 years.

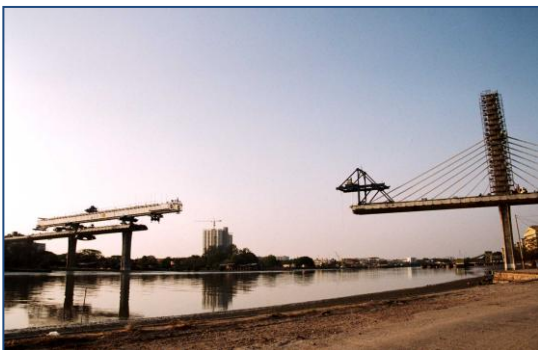
Freyssinet has more than 35 years experience in Middle East with the design and construction of all types of post tensioned structures.



2.1.3 Construction Methods

Freyssinet has extensive experience in methods of construction, including:

- Precast Segmental Construction



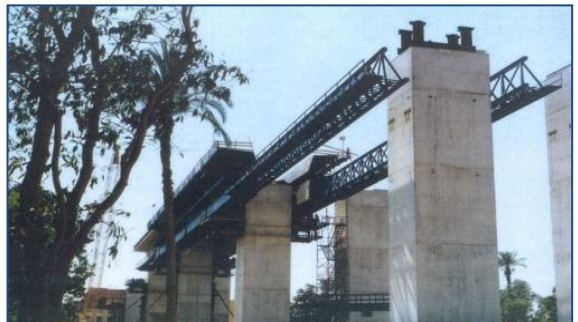
- Incremental Launching Method (ILM)



- Whole Span Lifting



- Cast in Situ Balanced Cantilever (FCM)



- Moveable Scaffolding System (MSS)



2.1.4 Handling

Hebetec is a wholly owned subsidiary of Freyssinet specialising in the lifting and handling of heavy loads.

The field of activities ranges from the preparation of solution concepts and the execution of lifting, lowering and sliding heavy loads.



2.1.6 FOREVA



500km Pipe Repairs - Libya

Freyssinet performs the following range of activities and services either as a Main Contractor or as a Sub-Contractor:

Investigations, Analysis & Design Services

- Investigation, analysis of defects and design of solutions.
- Cost and feasibility studies

Structural Repairs

- Façade repairs and renovations
- Concrete, masonry & steel repairs, notably for heritage structures or buildings
- Shotcreting
- Epoxy resin crack injection
- Strengthening using TFC[®] carbon fibre technology
- Strengthening using external prestressing

Structural Protection

- Concrete corrosion protection & repair
- Cathodic Protection and Prevention systems
- Concrete electrochemical realkalisation using Regebeton[™]
- Coating and Waterproofing membranes

2.1.7 Structural Fittings

Freyssinet has been a lead innovator in the development of all types of structural bridge fittings, including:

- Mechanical Bearings
- Elastomeric Bearings
- Movement Joints
- Paraseismic Devices
- Anti-Vibration Devices

2.1.8 Structural Monitoring

Advitam is a wholly owned subsidiary of Freyssinet



Advitam

specialising in the monitoring of structures.

Advitam devotes itself to understanding the risks of deterioration for infrastructures and implements software solutions, inspection, maintenance and monitoring systems in order to ensure their durability and serviceability at lower cost.

Advitam's activities include: research and development of innovative technologies, software development, on-site inspections, monitoring system integration and installation, measurements, risk and deterioration analysis, assessment of life-span, recommendations for repairs, maintenance and life-extension.



Some of Advitam's key activities include:

- Bridge Management Systems
- Structural Health Monitoring (WASHM)
- Pipeline Management Systems
- Scanprint[®] Inspection Software

Soundprint[®] Acoustic Monitoring

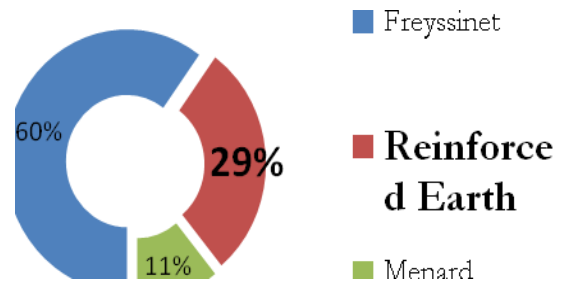
Group
2.2 Soils



Through the Reinforced Earth and Ménard Soltraitements companies, the Freyssinet Group has developed a full range of solutions for foundations, retaining walls and soil improvement. These solutions can relate to transport infrastructure – road and motorway works, airport and seaport platforms, etc. – as well as industrial and commercial sites, especially those intended for handling very heavy loads. Based on exclusive processes being constantly perfected, Reinforced Earth and Ménard Soltraitements solutions combine rapid installation, cost effectiveness, adaptability to difficult situations, environmental integration and reliability with precise commitments to results.



2.2.1 Reinforced Earth Company



Reinforced Earth

A major innovation in the field of civil engineering, Reinforced Earth is a soil strengthening technology based on combining compacted infill with metal or synthetic reinforcement strips attached to cladding units. Having been implemented on almost 40,000 projects throughout the world, Reinforced Earth solutions combine reliability (quick and easy construction), adaptability to complex situations (narrow confines, unstable slopes, substantial settlement) and creativity (variety of claddings).



Mechanically Stabilised Earth (MSE)

Reinforced Earth has developed a number of MSE technique, generally based on the use of "High Adherence" steel strip earth reinforcement, including:

- TerraClass®, the classical precast concrete panel facing system
- TerraMet®, the simple metallic facing system



- TerraTrel®, the wire mesh facing system



- TerraVert®, the 'green' concrete facing system

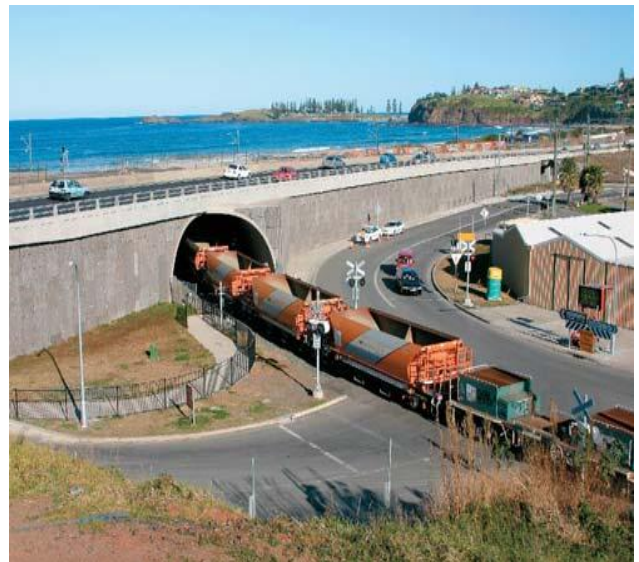


- TerraMid®, the modular block faced system



Precast Arches

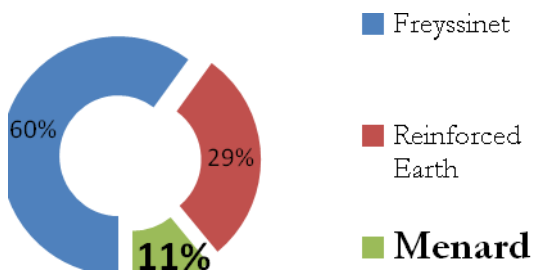
Designed and developed by Reinforced Earth, TechSpan® arches combine natural structural arching properties and the use of backfill to build underground, hydraulic, road or railway structures. The arches combine engineering performance (span up to 20m, backfill covering in excess of 30m), with simple assembly (half-sections mounted on foundations at the bottom and abutting one another at the top).



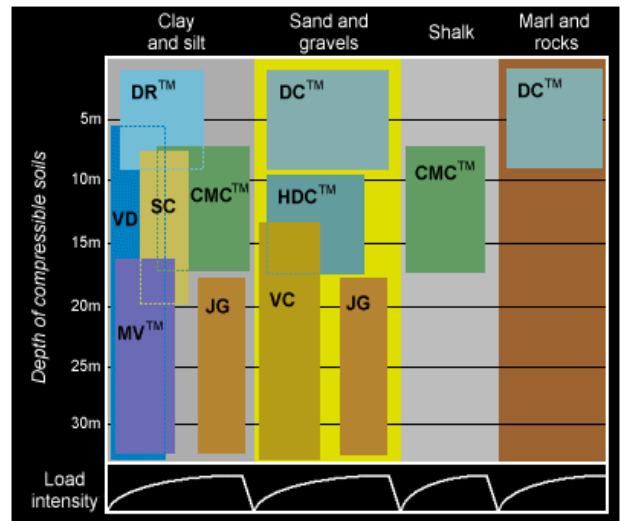
2.2.2 Geotech

Operating in 30 countries, for over 30 years Ménard Soltraitement has been developing innovative solutions that are an economical and reliable alternative to traditional deep foundations.

Ménard Soltraitement selects appropriate improvement techniques according to the geotechnical properties of the soil, the thicknesses of the various strata and the type of structure to be supported and – using its own equipment – implements turnkey solutions from preliminary surveys to project implementation. Complying with the most stringent requirements, these solutions have been tried and tested on numerous major projects throughout the world.



Menard Techniques Include:



- Rock and Soil Anchors
- Freyssimix - Jet Grouting
- Dynamic Compactions
- Dynamic Replacement
- Vacuum Consolidation
- Vibro Compaction
- Stone Columns
- Vertical Drains
- Rock Bolts
- Cable Bolts
- Slurry Walls
- Mini Piling
- Soil Nails
- Controlled Modulus Columns
- Permeation & Compaction Grouting

Group 2.3 Freyssibar

Developed by Freyssinet, worldwide leader in prestressing activities, the Freyssibar prestressing system comprises a wide range of fully threaded bar and associated anchoring, coupling and extension devices. Freyssinet is not just a supplier, but also a system provider with Stressing & Testing Services. Freyssibar prestressing system is adapted to many applications.



Tie Down Bolts - Jebel Ali Crane Base, Dubai

Freyssibar Field of Applications:

FreyssiBar System	Application	
FreyssiBar, FreyssiNail, FreyssiPile	• Geotechnical	- Ground & Rock Anchors, Rock Bolts, Soil Nails, Mini Piles
FreyssiBolt, FreyssiNail	• Mining & Tunneling	- Rock Bolts, Soil Nails, Spiles
FreyssiTie	• Marine	- Marine Tie Rods
FreyssiBar	• Post Tensioning	- Bridge construction systems (Permanent or temporary prestressing)
FreyssiBar	• Tie-Down Bolts	- for Cranes, Wind Turbines, Quadropol Machines,...
FreyssiBar	• On-shore / Off-shore	- Steel Structures (Permanent or Portable)
FreyssiBar	• Heavy lifting	
FreyssiBar	• Pile Testing	

Corrosion Protection

Corrosion Protection	Temporary	Permanent	Permanent >100 years
• Single Corrosion Protection	<input checked="" type="checkbox"/>	<input checked="" type="checkbox"/>	
• Double Corrosion Protection		<input checked="" type="checkbox"/>	<input checked="" type="checkbox"/>
• Denso wrapping		<input checked="" type="checkbox"/>	
• Hot-dip galvanizing		<input checked="" type="checkbox"/>	
• Epoxy coating		<input checked="" type="checkbox"/>	



PT - Saadiyat Bridge, Abu Dhabi Beams lifting, Thailand Nuclear reactor, China

&
QUALITY MANAGEMENT SYSTEM
CERTIFICATES



Bureau of Assessment Services

Managing Assurance with Confidence

Certificate of Registration

This is to certify that

Freyssinet Gulf LLC

P.O. Box: 36211, Al Saraya Building Block A, 1st Floor, Dubai, UAE

has been assessed by Bureau of Assessment Services and hereby attests that the organization complies with the requirements of Quality Management System in accordance with

ISO 9001:2008 (Quality Management System)

The Quality Management System is applicable to:

Design, Supply and Installation of Post- Tensioning System for Building and Bridges, Silos and Reservoirs; Design, Supply and Installation of MSE Walls and Tech Span Arches; Repair, Protection and Strengthening of Structures and Methods of Construction

[EA/NACE: 28/42.13 & 42.99]

Initial Certificate date	: 06 June 2013
Certificate issue date	: 11-April-2016
Certificate valid till	: 04-June-2019
Certificate No	: AE-BAS-Q0003793

Certification Manager
Bureau of Assessment Services



This certificate is validated through annual surveillance



Further clarification regarding the scope of the certificate and the applicability of ISO 9001:2008 requirements may be obtained by consulting the organization.

This certificate remains valid while the holder maintains the management system in accordance with the standard above, which will be audited by Bureau of Assessment Services through surveillance audits. This certificate remains the property of Bureau of Assessment Services. Lack of fulfillment of conditions as set out in the certification agreement may render this certificate invalid.

Issuing Country: Bureau of Assessment Services LLC, P.O. Box: 116898, Al Karama, Dubai, United Arab Emirates.



CERTIFICATE - ZERTIFIKAT - CERTIFICATO - CERTIFICAAT



Bureau of Assessment Services

Managing Assurance with Confidence

Certificate of Registration

This is to certify that

Freyssinet Gulf LLC

P.O. Box: 36211, Al Saraya Building Block A, 1st Floor, Dubai, UAE

has been assessed by Bureau of Assessment Services and hereby attests that the organization complies with the requirements of Quality Management System in accordance with

ISO 14001:2004 (Environmental Management System)

The Environmental Management System is applicable to:

Design, Supply and Installation of Post- Tensioning System for Building and Bridges, Silos and Reservoirs; Design, Supply and Installation of MSE Walls and Tech Span Arches; Repair, Protection and Strengthening of Structures and Methods of Construction

[EA/NACE: 28/42.13 & 42.99]

Initial Certificate date	: 06 March 2013
Certificate issue date	: 11-April-2016
Certificate valid till	: 04-March-2019
Certificate No	: AE-BAS-E0003794

Certification Manager
Bureau of Assessment Services



This certificate is validated through annual surveillance



Further clarification regarding the scope of the certificate and the applicability of ISO 14001:2004 requirements may be obtained by consulting the organization.

This certificate remains valid while the holder maintains the management system in accordance with the standard above, which will be audited by Bureau of Assessment Services through surveillance audits. This certificate remains the property of Bureau of Assessment Services. Lack of fulfillment of conditions as set out in the certification agreement may render this certificate invalid.

Issuing Country: Bureau of Assessment Services LLC, P.O. Box: 116898, Al Karama, Dubai, United Arab Emirates.



CERTIFICATE - CERTIFICATO - CERTIFICAT - ZERTIFIKAT - ZERTIFIKATION





Bureau of Assessment Services

Managing Assurance with Confidence

Certificate of Registration

This is to certify that

Freyssinet Gulf LLC

P.O. Box: 36211, Al Saraya Building Block A, 1st Floor, Dubai, UAE

has been assessed by Bureau of Assessment Services and hereby attests that the organization complies with the requirements of Quality Management System in accordance with

OHSAS 18001:2007 (Occupational Health and Safety Management System)

The Occupational Health and Safety Management System is applicable to:

Design, Supply and Installation of Post- Tensioning System for Building and Bridges, Silos and Reservoirs; Design, Supply and Installation of MSE Walls and Tech Span Arches; Repair, Protection and Strengthening of Structures and Methods of Construction

[EA/NACE: 28/42.13 & 42.99]

Initial Certificate date	: 06 March 2013
Certificate issue date	: 11-April-2016
Certificate valid till	: 04-March-2019
Certificate No	: AE-BAS-S0003795


 Certification Manager
 Bureau of Assessment Services



This certificate is validated through annual surveillance



Further clarification regarding the scope of the certificate and the applicability of OHSAS 18001:2007 requirements may be obtained by consulting the organization.

This certificate remains valid while the holder maintains the management system in accordance with the standard above, which will be audited by Bureau of Assessment Services through surveillance audits. This certificate remains the property of Bureau of Assessment Services. Lack of fulfillment of conditions as set out in the certification agreement may render this certificate invalid.

Issuing Country: Bureau of Assessment Services LLC, P.O. Box: 116898, Al Karama, Dubai, United Arab Emirates.



CERTIFICATE - ZERTIFIKAT - CERTIFICATO - CERTIFICAT

3a.
PROJECT RECORDS
-LETTER OF RECOMMENDATIONS-

Ref: KEO/GEN/373/12

27 December 2012

SUBJECT: Letter of Recommendation – Freyssinet Menard Qatar

TO WHOM IT MAY CONCERN

KEO International Consultants have provided design services and provided construction supervision services to projects with Freyssinet Menard Qatar. We are pleased to note that we have no objection to recommend Freyssinet Menard Qatar as a specialized Post tensioning subcontractor.

Up to now we have completed several successful projects with Freyssinet and across the board we have always been satisfied with their performance.

Yours Faithfully,
For **KEO International Consultants**



Kerry Galbraith
Director of Architecture & Engineering Services
Design Division



CQJ/13161/12

Date : 15 December 2012

FREYSSINET MENARD QATAR W.L.L.

P.O. Box: 24278

Doha - Qatar

Tel. (+974) 4465 2763 / 2769

Fax. (+974) 4465 2839

To Whom It May Concern

Subject: CERTIFICATE OF ACHIEVEMENT

We (**Commodore Qatar Contracting Co. LLC**) hereby certify that (**M/s Freyssinet Menard Qatar WLL**) as one of our major subcontractors and has carried-out successfully subcontract works for the **Post Tensioning Works** on the following projects;

1. **Commercial Bank Residence (Umbab Tower)**
(2B+G+29, commercial/residential building)
2. **Yohan Tower**
(2B+G+32, commercial building)
3. **Al Jassimya Tower**
(3B+G+M+40, commercial/residential building)

Freyssinet Menard Qatar has commenced and completed the subcontract works in accordance with the project's schedule and to the satisfaction of both the Consultant & Client.

We further appreciate for all the good cooperation extended to CQCC during the tenure of the projects until its final completion and handing-over to the respective Client/Consultant.

Yours faithfully

For **Commodore Qatar Contracting Co. LLC**

Dr. Kassem Rahal
Area Manager





Date : December 23, 2012

TO WHOM IT MAY CONCERN

Subject: Letter of Recommendation – Freyssinet Menard Qatar

This is to confirm that we have completed successfully several Towers with Freyssinet Menard Qatar, and their performance was always on the high level.

REDCO-ALMANA highly recommends having Freyssinet Menard Qatar as the specialized Post Tensioning sub-contractor in any project regardless its scale.

Best Regards,
For Redco Construction AlMana


Eng. Eyad Khader
Projects Director



ATKINS

WS Atkins & Partners Overseas
PO Box 5620
Dubai
United Arab Emirates

Telephone +971 4 4059300
Fax +971 4 4059301

office.dubai@atkinsglobal.com
www.atkins-me.com
www.atkinsglobal.com

Ref: RD8050./RDS/RMO/R1- 5744
22 July 2007

M/S Freyssinet
P.O. Box 36211
Dubai

Fax No. 2868009

To Whom it may concern

Dear Sirs,

PROJECT REFERENCE

We write to confirm that M/S Freyssinet provided the design, supply and installation of the Post Tensioned system, for the flat slabs on Jumeriah Beach Project Sector 5, for which W.S. Atkins was the Sector consultant. We were very satisfied with the quality of the design and the PT works and with the overall service provided by M/S Freyssinet.

Yours faithfully,

for **WS Atkins & Partners Overseas**



Bob Scott
Technical Manager



دبليو. أس. أتكنز وشركاه لما وراء البحار
ص. ب ٥٦٢٠
دبي
الإمارات العربية المتحدة

تليفون +٩٧١ ٤ ٤٠٥٩٣٠٠
فاكس +٩٧١ ٤ ٤٠٥٩٣٠١



Ref : SH0700/SH/L/06318/07

: المرجع

Date : 22nd July 2007

: التاريخ

Subject : **Post Tension Contractor Work Certificate**

To Whom It May Concern

This is to certify that Khatib and Alami have worked with Freyssinet in many Post-Tensioned projects in the past few years.

We have both an excellent professional and cordial relationship with Freyssinet. They have a first-rate specialized design team, and their construction team is well proficient.

We have completed many successful projects, and currently we have some ongoing projects with freyssinet as they are Post-Tensioning sub-contractor.

We would have no reservation in recommending or approving Freyssinet on future projects, and look forward to a fruitful relationship in the future.

Yours faithfully,

For **KHATIB & ALAMI**
(Consolidated Engineering Co.)



H. Daabas
(Deputy Head of Structural Section)

\\Struc_jjorget\RSarhan\ZM\General\06318-07\Letter.doc



Subject : Post Tension Contractor Work Certificate

To Whom It May Concern:

This is to certify that National Engineering Bureau have worked with Freyssinet in many Post Tensioned projects in the past few years.

We have both an excellent professional and cordial relationship with Freyssinet, they have a first-rate specialized design team, and their construction team is well proficient.

We have completed many successful projects, and currently we have some ongoing projects with freyssinet as they are Post-Tensioning sub-contractor.

We would have no reservation in recommending or approving Freyssinet on future projects, and look forward to a fruitful relationship in the future.

Thanks and best regards,
For National Engineering Bureau


Jamil Jadallah
Executive Director/Partner
DUBAI - U.A.E.
NATIONAL ENGINEERING BUREAU

PRIVATE & CONFIDENTIAL

19 July 2007

To Whom It May Concern:

**RE : Freyssinet Middle East
Letter of Recommendation**

We have had the opportunity to have worked with Freyssinet Middle East, P. O. Box 36211, Dubai, UAE on a number of successful projects in Dubai Market.

We have found their design approach to be excellent and their construction team to be very professional and thorough.

We hope to have the opportunity to work with them in the future and we do not hesitate to recommend them to you now.

If you require any further information, contact the undersigned or Niculae Stephan in our office.

Yours truly,



Chris Pal
Director, Engineering Services
Tel. : 04-330 4400
chris.pal@norr.ae

3b.
PROJECT RECORDS
-LIST OF PROJECTS
AND REFERENCES-

GATE DISTRICT TOWERS & SHAMS AD



Client	: Sorouh
Consultant	: Khatib & Alami
Main Contractor	: Arabian Construction Company
Location	: Abu Dhabi, UAE
Scope of Work	: Design, supply and install over 1,200 tons of T13 and T15 strands spread over 250,000 sq.m of suspended slab including 3,500 cu.m transfer beams and walls. Vertical prestressing with Freyssibars has been used in the cantilever walls
Status	: completed 2012

CENTRAL MARKET



Consultant	: WS ATKINS
Main Contractor	: Arabian Construction Co.,
Location	: Abu Dhabi, UAE
Tonnage of Strand	: 395.332 Tons
Scope of Works	: Post Tensioning Slabs – Un Bonded PT
Status	: Completed 2012

ABU DHABI FINANCIAL DISTRICT



Consultant	: SEREX
Main Contractor	: Oger Abu Dhabi
Location	: Abu Dhabi, UAE
PT Area	: 134,374.00 m²
Tonnage of Strand	: 631.35 Tons
Scope of works	: Post Tensioning Slabs
Status	: Completed 2010

ETIHAD TOWERS



Project Name	: ETIHAD TOWERS
Consultant	: CANSULT
Main Contractor	: ARABIAN CONSTRUCTION CO. – ACC
Location	: ABU DHABI – UAE
Tonnage of Strands	: 137.85 tons
Status	: Completed on YEAR 2010

NATION TOWERS



Project Name	: NATION TOWERS
Consultant	: KEO INTERNATIONAL CONSULTANT
Main Contractor	: NPC-ARABTEC JOINT VENTURE
Location	: ABU DHABI – UAE
Scope of Work	: Design, Supply & Supervision for (112,000) m2 of Post Tensioned Slabs
Status	: Completed on MARCH 2011

SHAMS ABU DHABI DEVELOPMENT



Project Name	: SHAMS ABU DHABI DEVELOPMENT
Consultant	: RW ARMSTRONG / NATIONAL ENGINEERING BUREAU
Main Contractor	: ARABIAN CONSTRUCTION CO. - ACC
Location	: ABU DHABI – UAE
Scope of Work	: Design, Supply & Supervision for (171,000) m2 of Post Tensioned Slabs
Status	: Completed on YEAR 2010

AL AIN UNIVERSITY CAMPUS DEV'T



Client	: MUBADALA DEVELOPMENT
Consultant	: COX CONSULTANTS
Main Contractor	: OGER ABU DHABI
Location	: AL AIN, UAE
PT Area	: 213,911.23 sq. m. (Slabs & Beams)
Tonnage of Strands	: 891.34 tons (Slabs & Beams)
Status	: Completed on April Year 2009

AL WAHDA CITY-1



Client	: AL WAHDA SPORTS CULTURAL CLUB
Consultant	: KHATIB AND ALAMI
Main Contractor	: CIVIL ENGINEERING & CONTRACTING
Location	: ABU DHABI, UAE
PT Area	: 147,266 sq. m.
Tonnage of Strands	: 705 tons
Status	: Completed on March Year 2009

SKY VIEWS



Client	: EMAAR PROPERTIES P.J.S.C
Consultant	: NORR
Main Contractor	: ARABIAN CONSTRUCTION COMPANY
Location	: DUBAI, UAE
PT Area	: 124,998.00 sq. m.
Tonnage of Strands	: 400 TONS
Scope of works	: POST TENSIONING SLABS
Status	: ON - GOING

OFFICE OF THE FUTURE



Client : **MINISTRY OF CABINET AFFAIRS - UAE**
Consultant : **THORNTON TOMASETTI**
Main Contractor : **E. CONSTRUCT**
Location : **DUBAI, UAE**
Scope of works : **POST TENSIONING 3D Printed Elements**
Status : **COMPLETED 2016**

PARK TOWERS



Client	: DAMAC Properties Co., LLC
Consultant	: Engineering Consultants Group
Main Contractor	: Shapoorji Pallonji Mideast LLC
Location	: Dubai, UAE
PT Area	: 138,598.00 sq.m.
Tonnage of Strand	: 561.915 tons
Scope of Works	: Post Tensioning Slabs
Status	: Completed 2010

SUBURBIA DOWNTOWN



Client	: DAMAC Crown Properties LLC
Consultant	: Architectural and Planning Group
Main Contractor	: Shapoorji Pallonji Mideast LLC
Location	: Jebel Ali, UAE
PT Area	: 52,221.33 m²
Tonnage of Strand	: 190.080 tons
Scope of Work	: Post Tensioning Slabs
Year Completed	: November 2011

JUMEIRAH BEACH RESIDENCE HOTEL



Client : **DUBAI TECHNOLOGY & MEDIA FREE ZONE AUTHORITY**
Consultant : **NOOR GROUP CONSULTANT**
Main Contractor : **AHMADIAH CONTRACTING AND TRADING**
Location : **JBR, DUBAI, UAE**
Status : **Completed on Year 2005**

GOLF TOWERS II



Client	: EMAAR
Consultant	: NATIONAL ENGINEERING BUREAU
Main Contractor	: AL BASTI & MUKTHA
Location	: DUBAI, UAE
PT Area	: 64,751 sq. m.
Tonnage of Strands	: 233 tons
Status	: Completed on Year 2007

BURJ DUBAI DEVELOPMENT



Client	: EMAAR PROPERTIES
Consultant	: NOOR GROUP CONSULTANTS INTERNATIONAL
Main Contractor	: BIN LADIN CONTRACTING GROUP
Location	: DUBAI, UAE
PT Area	: 86,000 sq.m.
Tonnage of Strands	: 286 tons
Status	: Completed on Year 2007

AL KHAILI TOWER



Client	: MR. HAMAD SUHAIL O. AL-KHAILI
Consultant	: NATIONAL ENGINEERING BUREAU
Main Contractor	: TRANSEMIRATES CONTRACTING
Location	: DUBAI, UAE
PT Area	: 96,700 sq.m.
Tonnage of Strands	: 370 tons
Status	: Completed on Year 2007

JUMEIRAH LAKE TOWERS X1, X2 & X3



Client	: AL NAHDA REAL ESTATE
Consultant	: NATIONAL ENGINEERING BUREAU (NEB)
Main Contractor	: BELHASA ENGINEERING & CONTRACTING
Location	: DUBAI, UAE
PT Area	: 152,731 sq. m.
Tonnage of Strands	: 465 tons
Status	: Completed on Year 2009

SKYCOURTS COMPLEX



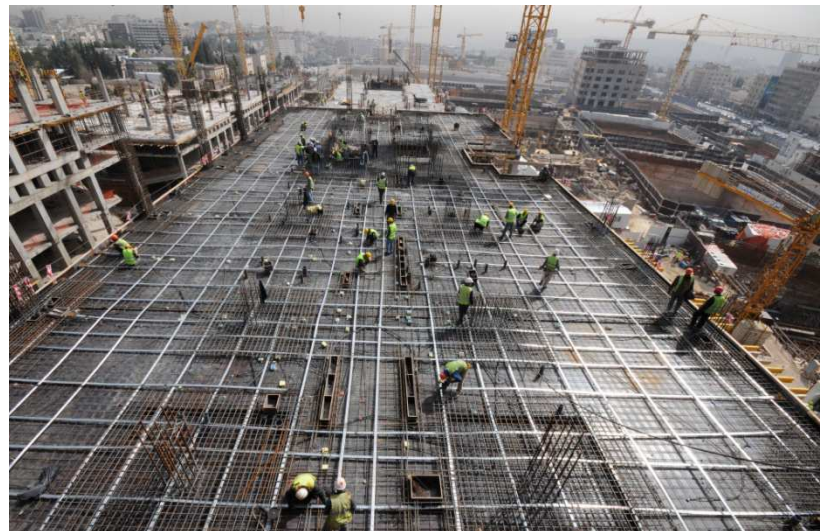
Client	:SKY COURTS LLC
Consultant	:LACASA ARCHITECTS & ENGINEERING CONSULTANTS
Main Contractor	:CHINA STATE CONSTRUCTION ENGINEERING CORP.
Location	:DUBAILAND, DUBAI, UAE
PT Area	:425,000 sq.m.
Tonnage of Strands	:1,540 tons
Status	:Completed on September 2009

CHURCHILL TOWERS



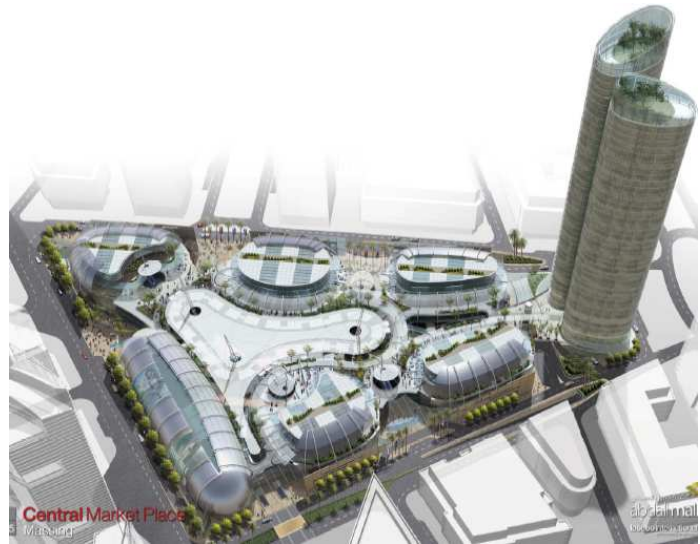
Client	: DEYAAR DEVELOPMENT
Consultant	: DESIGN AND ARCHITECTURAL BUREAU (DAR)
Main Contractor	: OGER DUBAI LLC
Location	: DUBAI, UAE
PT Area	: 193,845 sq. m.
Tonnage of Strands	: 727.74 tons
Status	: Completed on Year 2009

THE BOULEVARD PROJECT



Consultant	: LASECO
Main Contractor	: MASAR-MID JOINT VENTURE
Location	: AMMAN, JORDAN
PT Area	: 195,000 sq.m
Tonnage of Strand	: 1,429.29 tons
Status	: Completed on November Year 2009

ABDALI CENTRAL MARKET



Consultant	: Laceco Engineering and Architects
Main Contractor	: Habash Deir
Location	: Amman, Jordan
PT Area	: 107,207.00m ²
Tonnage of Strand	: 795.00Tons
Scope of works	: Alternative - Post Tensioning Slabs
Year Completed	: On-going

AL HUSSEINI – AMAZON RIVER



Main Contractor	: Al Hussein Group
Location	: Amman, Jordan
PT Area	: 40,598.77 m²
Tonnage of Strand	: 141.20 Tons
Scope of works	: Post Tensioning Slabs
Year Completed	: January 2011

MECCA MALL EXTENSION – PHASE 2



Consultant	: BISHR CONSULTANTS
Main Contractor	: KURDI GROUP
Location	: AMMAN, JORDAN
PT Area	: 40,342 sq.m
Tonnage of Strands	: 116 tons
Status	: Completed on Year 2006

VERTEX TOWER



Main Contractor : **DUBAI CONTRACTING CO./e.CONSTRUCT**
Location : **AMMAN, JORDAN**
PT Area : **67,523.03 sq.m**
Tonnage of Strand : **270 tons**

ISLAMIC HOSPITAL



Client	: Islamic Charity Center
Consultant	: Consultant Group
Main Contractor	: Al Fadel Engineering & contracting Co.
PT Area	: 31,345.00 m ²
Scope	: Post Tensioned Slabs

SAMBA TOWERS



Project Name	: SAMBA TOWER
Consultant	: Buro Happold Consulting Engineers
Main Contractor	: El Seif Engineering Contracting
Location	: Riyadh, KSA
Scope of Work	: Design, Supply & Supervision for (65,000) m2 of Post Tensioned Slabs
Year Completed	: Completed April 2012

GOSI OLAYA TOWERS



Project Name	: GOSI OLAYA TOWERS
Consultant	: Zuhair Fayez Partnership Consultants
Main Contractor	: Nesma and Partners
Location	: Riyadh, KSA
Scope of Work	: Design, Supply & Supervision for (209,000) m2 of Post Tensioned Slabs
Year Completed	: Completed March 2012

JABEL OMAR DEVELOPMENT PROJECT



Project Name	: Jabel Omar Development Project
Consultant	: Dar Al Handasah
Main Contractor	: Nesma and Partners
Location	: Makkah, KSA
Scope of Work	: Design, Supply & Supervision for (230,000) m2 of Post Tensioned Slabs
Special Design	: Elevated Transfer slabs, carries 25 floors.
Year Completed	: Completed 2013

RAFAL TOWER



Consultant	: e.Construct
Main Contractor	: Dubai Saudi Arabia Contracting Company
Location	: Riyadh, KSA
PT Area	: 65,000.00 m²
Tonnage of Strand	: 280.00 Tons
Scope	: Post Tensioning Slabs
Year Completed	: September 2012

KING ABDULLAH FINANCIAL DISTRICT Parcels 5.07 & 5.08



Consultant	: ZUHAIR FAYEZ PARTNERSHIP
Main Contractor	: SAUDI CONSTRUCTIONERS EST
Location	: RIYADH – KSA
PT Area	: 142,353 sq. m.
Tonnage of Strands	: 686.531 tons
Status	: completed in March 2011

KING ABDULLAH CENTER FOR CANCER & LIVER DISEASES



Consultant	: MUSTAG HUIJLAN
Main Contractor	: AL BAWANI CONSTRUCTION COMPANY
Location	: RIYADH – KSA
PT Area	: 120,000 sq. m.
Special Design	: Deep Transfer Beams
Status	: Completed 2012

KING ABDULAZIZ CENTER FOR WORLD CULTURE



Project Name : KACKC
Consultant : BURO HAPPOLD CONSULTING ENGINEERING
Main Contractor : SAUDI OGER
Location : THAHRAN, KSA
Scope of Work : Design, Supply & Supervision for (44,500) m2 of Post Tensioned Slabs, Supply and installation of 30tons Freyssibars
Status : Completed 2012

Freyssinet Menard Saudi Arabia Ltd.

PO Box 1088 Riyadh 11431
Kingdom of Saudi Arabia
Tel. No. +9661 288 56 06 / 2 6784763
Fax No. +9661 466 04 17 / 2 6283486

AL TURKI PLAZA OFFICE TOWER



Consultant : **SAMIR KHAIRALLAH & PARTNERS**
Main Contractor : **AL SAAD GENERAL CONTRACTING**
Location : **AL KHOBAR, KSA**
PT Area : **13,802 sq.m**
Tonnage of Strand : **69.577 tons**
Status : **November 2009**

FACULTY OF COLLEGE IN BUSINESS ADMINISTRATION



Consultant	: AL NAEEM CONSULTANTS
Main Contractor	: AL THERB EST.
Location	: RIYADH, KSA
PT Area	: 25,499 sq.m
Tonnage of Strand	: 103.75 tons
Status	: May 2011

ASTER BUILDING



Consultant	: MONTER H. SAWAN CONSULTANT ARCHITECT
Main Contractor	: RUWAD CIVIL CONSTRUCTION (RCC)
Location	: JEDDAH, KSA
PT Area	: 11,600 sq.m
Tonnage of Strand	: 55 TONS
Year of Completion	: March 2011
Special Design	: RAFT foundation

TA'AZIZ TOWER



Client	: TA'AZEEZ REAL ESTATE DEVELOPMENT Co.
Consultant	: SAMIR KHAIRALLAH & PARTNERS
Main Contractor	: PROJECT BUILD CO LTD.
PT Area	: 27,118.21 sq.m
Tonnage of Strand	: 110 TONS
Status	: On-going

Dar Al Youm Tower



Client	: DAR AL YOUM
Consultant	: BINA ENGINEERING CONSULTANT
Main Contractor	: AL YAMAMA
PT Area	: 21,625 sq.m
Tonnage of Strand	: 85 TONS
Status	: On-going

MAJDOUL TOWER



Consultant	: CONSOLIDATED CONSULTANTS
Main Contractor	: UNITED ENGINEERING CONSTRUCTION CO.
Location	: RIYADH, KSA
PT Area	: 56,761.00 sq. m
Tonnage of Strand	: 398.00 TONS
Status	: On-going

Freyssinet Menard Saudi Arabia Ltd.

PO Box 1088 Riyadh 11431
Kingdom of Saudi Arabia
Tel. No. +9661 288 56 06 / 2 6784763
Fax No. +9661 466 04 17 / 2 6283486

KAFD CAR PARK



Client	: RAYADAH INVESTMENT COMPANY
Consultant	: BURO HAPPOLD
Main Contractor	: EL SEIF ENGINEERING CONT. COMPANY LTD
PT Area	: 127,155.00sq.m
Tonnage of Strand	: 526.00 TONS
Status	: On-going

UNITED TOWER



Client	: United Real Estate Company
Consultant	: KEO International Consultants
Main Contractor	: Ahmadiyah Contracting and Trading
Location	: Kuwait City, Kuwait
PT Area	: 44,884.95 m²
Tonnage of Strand	: 214.64 Tons
Scope	: Post Tensioning Slabs
Year Completed	: April 2010

SABAH AL SALEM UNIVERSITY CITY (KUWAIT UNIVERSITY) COLLEGE OF ARTS & EDUCATION



Consultant	: Dar Al Handasa
Main Contractor	: Arabtec & Combined Group JV
Tonnage of Strand	: 560 Tons
Scope	: Post Tensioning Slabs and Beams
Status	: On-going

KUWAIT INVESTMENT AUTHORITY HQ BUILDING



Client:
Kuwait Investment Authority

Consultant:
KEO International

Main Contractor:
First United

Tonnage of Strand:
270 Tons

Scope:
Post Tensioning Slabs and Beams



NEW AL-SABAH HOSPITAL



Client	: State of Kuwait - Ministry of Health
Consultant	: Soors Engineering Bureau
Main Contractor	: Shapoorji Pallonji Mideast LLC
Tonnage of Strand	: 323 Tons
Scope	: Post Tensioning Slabs
Status	: On-going

MURRUR MIXED USE



Client	: Dep't of Private Properties Emirates Ajman
Consultant	: AJ Consutants and Rafik El-Khoury and Partners
Main Contractor	: Ali Moosa and Sons Contracting
Location	: Ajman, UAE
PT Area	: 179,231.24 m ²
Tonnage of Strand	: 650.6040 Tons
Scope	: Post Tensioning Slabs
Year Completed	: December 2010

Residential and Infrastructure PCKG for Ras Al Hamra, Oman



Client	: Ras Al Hamra
Consultant	: KEO International
Main Contractor	: Al Turki Enterprise
Location	: Oman
PT Area	: 17,300 m ²
Scope	: Post Tensioning Slabs

CITY HOTELS – MUSCAT



Client	: OMRAN
Consultant	: COWI & PARTNERS LLC
Main Contractor	: LARSEN AND TOUBRO (OMAN) LLC
Location	: Oman
PT Area	: 41,600 m²
Scope	: Post Tensioning Slabs

THE PEARL VIVA BAHRIYA VB09



Client	: United Development Company
Consultant	: CICO Consulting Architects Engineers
Main Contractor	: United Construction Establishment
Location	: Doha, Qatar
PT Area	: 26,634.00 m²
Tonnage of Strand	: 91.398 tons
Scope of works	: Post Tensioning Slabs
Year Completed	: February 2012

JASSIMIYA TOWER



Client	: Shk. Jassim Bin Khalifa Bin Hamad Al Thani
Consultant	: EGEQ Qatar Engineering Consultation
Main Contractor	: Commodore Contracting Co.,
Location	: Doha, Qatar
PT Area	: 63,321.00 m ²
Tonnage of Strand	: 221.80 Tons
Scope	: Post Tensioning Slabs
Year Completed	: January 2012

PLATINUM TOWER



Project Name	: AL BIDDA TOWER - QATAR
Client	: PLATINUM TOWER COMPANY
Consultant	: GHD
Main Contractor	: HIGGS & HILL/QATARI ARABIAN CONST. CO.
Location	: DOHA, QATAR
Tonnage of Strands	: 100 tons
Status	: Completed on Year 2008

PORTO ARABIA



Client	: SABBAN PROPERTY INVESTMENTS
Consultant	: KEO INTERNATIONAL
Main Contractor	: AFRINA TRADING & CONSTRUCTION CO.
Location	: DOHA, QATAR
PT Area	: 115,023 sq. m.
Tonnage of Strands	: 405.03 tons
Status	: Completed on Year 2007

2B+G+M+13 RESIDENTIAL BUILDING



Client	: MR. HASSAN SHOKRI H. AL MAHSIN
Consultant	: DIWAN AL-EMARA
Main Contractor	: REDCO CONSTRUCTION
Location	: DOHA, QATAR
PT Area	: 57,195 sq. m.
Tonnage of Strands	: 213 tons
Status	: Completed on Year 2007

AL FARDAN RESIDENCE WEST BAY



Client	: OMAR HUSSAIN AL FARDAN
Consultant	: ARAB ENGINEERING BUREAU / HYDER CONSULTING
Main Contractor	: CONSTRUCTION DEVELOPMENT COMPANY L.L.C
Location	: DOHA, QATAR
PT Area	: 68,000 sq.m
Tonnage of Strands	: 255 tons
Status	: Completed on Year 2008

AWARDED JOBS IN DUBAI, UNITED ARAB EMIRATES



YEAR	PROJECT NAME	CLIENT	CONSULTANT	MAIN CONTRACTOR	AREA (sq m)
2000-2001	G+3, Al Karama	-	Al Huda Contracting Co.	Private	-
2001-2002	Safa Park Intersection	-	National Wheel J & P	Dubai Municipality	-
2001-2002	(G+46-Storey) Capricon Tower Shaikh Zayed Road	-	Dubai Contracting Company	Private	-
2001-2002	Capricon Tower Car Park	-	Dubai Contracting Company	Private	-
2001-2002	Shangri'la Car Park	-	Al Habtoor Murray & Roberts J.V.	Private	-
2002	Uptown Development at Mirdif, Dubai	-	-	Al Hamed Dev't & Construction L.L.C	63,569.00
2002	T1 Apartment Buildings	-	Al Hashemi	Emaar Properties	-
2003	Emirates Hills - T1A Apartments	-	Engineering Contracting Company	Emaar Properties	-
2003	Emirates Hills - T2A Apartments	-	National Engineering Bureau (NEB)	Al Shafar Trans. & Contracting Company	-
2003	Al Mankhool Towers on Plot No. 316-270	-	WS Atkins	Bu Haleeba Contracting	-
2003-2004	(2B+G+M+50) Residential/Commercial Building - Marina Crown	-	Transemirates Contracting	Al Zarooni	-
2003-2004	(2B+G+M+13+HC) Commercial/Residential	-	National Engineering Bureau	Transemirates Contracting	-
2004	Mall of the Emirates	-	Mott MacDonald	Kansaheb Civil Engineering (L.L.C.)	-
2004	Dubai Metals & Commodities Center Industrial Building	-	Engineering Consultant Group	Australian Prestressing Services (APS)	-
2004	Legend Plaza Commercial & Residential Building	-	Adman Saffarini	Binladin Contracting Group (L.L.C.)	-
2004	(G+7+HC) Building on Plot No. 317-658	-	Adman Saffarini	Al-Arif Contracting Co. (L.L.C)	-
2004	(B+G+4) Commercial / Residential Building Plot No. 319-113	-	The Fraser Nag Partnership	Al-Arif Contracting Co. (L.L.C)	-
2004-2005	(B+G+6) residential Building on Plot No. 4L, District 4	-	-	Obaid Hareb Bldg. Contracting Co. (L.L.C)	-
2004	(B+G+10Floors) Residential Building on Plot CBD-09	-	Belyoahah Engineering	Al-Arif Contracting Co. (L.L.C)	-
2005	Retail/Residential Development Phase II, The views Site 19 - Plot 383-215	-	Holford Associates	Al Shafar Trans. & Contracting Co.	-
2005	JUMEIRAH BEACH RESIDENCE - SECTOR NO.5	-	WS Atkins	Al Ahmadia	145,715.15
2005	B+G+10+HC ON PLOT CBD-9 INTERNATIONAL CITY	-	Bel Youha Consultants	Al Arif Contracting Co.	12.50
2005	B+G+12+GYM ON PLOT NO. 241 - 517	-	KWEC Consultants	OST Constructional Projects	12.00
2006	2B+G+11+R ON PLOT NO. 319 - 298	-	Arif & Bintok	Transemirates	12,112.56
2006	B+G+11+R ON PLOT NO. 319 - 301	-	Arif & Bintok	Sun Engineering	28,852.04
2006	G+2STAFF ACCOMMODATION FOR FLIGHT CATERING EMIRATES	-	Al Hashemi	Civic Builders	12.00
2006	BURJ DUBAI BUSINESS PARK - PHASE II	-	DAR Consultants	ANC	122,350.00
2006	RES'D'L BLDG. ON PLOT 373-433	-	E. Construct	DCC	34,573.00

AWARDED JOBS IN DUBAI, UNITED ARAB EMIRATES



YEAR	PROJECT NAME	CLIENT	CONSULTANT	MAIN CONTRACTOR	AREA (sq m)
2006	B+G+6 BLDG. ON PLOT 242-395	-	Saffarini	Obaidulla Contracting Co.	-
2006	2B+G+M+1 COMM'L. BLDG. ON PLOT 332-901	-	E. Construct	DCC	3,972.04
2006	B+G+7+HC ON PLOT 316-601	-	FRASER NAG	Al Arif Contracting Co.	11,608.00
2006	ZEN GARDEN DUBAI	-	ACG	Al Shafar Trans.	107,000.00
2006	2B+G+4 STOREY GEN. ELECTRIC HQ BLDG. ON PLOT NO. A-004-030 D.I.C, DUBAI	-	DAR Consultants	ANC	12,486.77
2006	(2B+G+18) Storey Residential Bldg.	-	Khatib & Alami	Civilco Engineering & Const. Co.	15,830.00
2006	(GF+3rd to 25th floor+roof floor) JBR {P-055}-HOTEL H02{B01}- PACKAGE H2505	-	Khatib & Alami	Al Ahmadiyah	25,367.00
2006	G+10 RESD'L BLDG. ON PLOT 45	-	Bu Humaid Consultants	Civic Builders	-
2006	3B+G+M+5 OFFICE BLDG. ON PLOT 319-303	-	E. Construct	DCC	11,478.48
2006-2007	(2B+G+M+25) Residential/Commercial Building on Plot 317-213	-	Design Architecture (DAR)	Al Shafar Trans. & Contracting Company	-
2006-2007	5+G+Mech+39 Floors Bonnington Towers at Plot J-3 Jumeirah Lake, Dubai	-		e.Construct FZ LLC	-
2008-2011	Pier 8 Residential Development Plot No.: 392-318 @ Dubai Marina, Dubai	-	WS Atkins	Modern Executive Systems Contracting	-
2007	2B+G+8 ON PLOT 373-1272 AL BARSHA - 1ST	-	Oryx Consultants	Delta Emirates	6,584.77
2007	(B+G+11 Floors) on Plot No. 241-400 @ Al Nahda Second Dubai	-	Al Waha Eng'g. Consultant	CIVIC BUILDERS	8,675.00
2007	(G+1) Private Villa on Plots D104, D106 & D108, Nakhlah, Jumeirah, Dubai, UAE	-	Al Saraya Engineer	Hamilton Project Management (HPM)	372.20
2007	GOLF TOWERS - II, SITE 35	-	NEB	Al Basti & Mukta	103,315.00
2007	(PODIUM) JBR {P-055}-HOTEL H03{B01}- PACKAGE H3505	-	NOOR GROUP CONSULTANTS	Al Ahmadiyah	-
2007	(3B+G+5P+3S+30 Floors+HC) Commercial & Office Tower on Plot No. A-002-37 Tecom Dubai, UAE	-	NEB	Transemirates	97,717.09
2007	JUMEIRAH LAKE TOWERS @ PLOT B2	-	ALGURG CONSULTANTS	China State Construction Eng'g. Corp.	42,708.00
2007	IRIS BLUE TOWER – Dubai Marina on Plot No. 393 - 503	-	WS Atkins & Partners	Al Hamadiyah Contracting & Trading	32,360.00
2007	GOLF TOWERS - III, SITE 34	-	NORR GROUP	CSHK	64,751.00
2007	JBR {P-055}-HOTEL H01{A04}- PACKAGE H1505	-	RMJM	Al Ahmadiyah	28,528.00
2007	Commercial Centre for Mr. Abdul Hadi Al Majali	-	-	Al Hussein Group	24,709.50
2007	Proposed (2B+G+M+25) Res. / Comm'l. Bldg. on Plot No. 317 – 213, Mankhool, Dubai	-	Design & Architectural Bureau (DAR)	Al Shafar Transport and Contracting	25,401.00
2007	5+G+Mech+39 Floors Bonnington Towers at Plot J-3 Jumeirah Lake, Dubai	-	-	e.Construct FZ LLC	44,418.00
2007	AL HAMRA PALACE HOTEL (C014)	-	-	AL HAMRA CONSTRUCTION CO. L.L.C	
2007	G+6 Building on Plot No. 421-601 at Al Warqa	-	Orion Engineering Consultants	Al Arif Contracting Co.	636.42
2007	(2B+G+6+Gym) on Plot 373 - 109 at Al Barsha Dubai	-	-	Khalfan Al-Shaar Contracting Co. LLC	22,884.00

AWARDED JOBS IN DUBAI, UNITED ARAB EMIRATES



YEAR	PROJECT NAME	CLIENT	CONSULTANT	MAIN CONTRACTOR	AREA (sq m)
2007	2B+G+2 Comm/Res. On Plot 352-969 Jumeirah-Dubai	-	-	e.Construct FZ LLC	85,239.66
2007	Burj Dubai Development, Burj Views	-	NOOR GROUP CONSULTANTS	Binladin Contracting Group	80,950.31
2007	Emirates Bank International Building in Sharjah	-	KHATIB & ALAMI Consolidated Eng'g. Co.	Gustav Pegel & Sohn	13,320.00
2008	Al Mamoon Exchange and Telecommunication Center in Iraq, Al Mamoon Baghdad	-	-	Alfaconsult	17,123.50
2008	Construction of B+G+1 Villa (Dire Office) for HH Shk. Hamdan Bin Rashid Al Maktoum	-	Bonyan Engineering	Al Hamadiha Contracting & Trading	1,460.00
2008	2B+G+8 ON PLOT 373-1358 AL BARSHA - 1ST	-	Oryx Consultants	Delta Emirates	16,219.00
2008	2B+G+8 FLOORS RESIDENTIAL BLDG. ON PLOT NO. 316-571	-	Port Saeed Engineering	S. S. Lootah Contracting Co.	16,630.00
2008	3B+G+14+HC Comm./Office Building on Plot 13 - 001 at Dubai Silicon Oasis	-	NEB	Sun Engineering	53,601.00
2008	Lake Shore Tower 1 (4B+G+44+Tech F) on Plot Y2, Dubai	-	KHATIB & ALAMI Consolidated Eng'g. Co.	Pivot Engineering	41,980.00
2008	Commercial Development (3B+G+6+Penthouse) on Plot No. 373-411 @ Al barsha First, Dubai, UAE	-	ARKITEKNIK Int'l. Consulting Engineers	TECHNOMAN Contracting	16,349.00
2008	4B+G+M+16 Offices Bldg. on Plot #125-133, Rigga Al Buteen, Dubai for Bin Ladin	-	ARENCO	Binladin Contracting Group	10,952.00
2008	3B+G+10 Storey Commercial & Office Building on Plot No.: 129-657 @ Port Saeed, Dubai - UAE	-	LACASA	EmirateMan	10,411.41
2008	(G+3+Roof) @ Al warqa, Dubai for Mr. Hamad Al Arif	-	Local Engineering Office	Al Arif Contracting Co.	5,318.00
2008	BAY GATE OFFICE TOWER AT PLOT NO. BB.A01.003 AT BUSINESS BAY	-	WHITBY & BIRDS	AL NEKHREH CONTRACTING CO. LLC	67,624.00
2008	Bayswater (2B+G+4P+24F) Office Building on Plot No. BB.A03.006 @ Business Bay, Dubai, UAE	-	Dubarch	China State Construction	58,471.79
2008	Purchasing Pavilion Office Building @ IMPZ	-	ARCHON	ASCON	47,270.45
2008	SHAHBA MALL - PHASE I	-	Bishr Consultants	Kurdi Group	110,000.00
2008	Atlantis Management & Staff Accommodation	-	Bel-Yoahah	ASCON	110,359.97
2008	Commercial/Residential Development for Al Ghurair Investment, Plot No. 316-240 @ Al Barsha First, Dubai	-	-	Associated Construction and Investments Co. (ASCON)	63.65
2009	Jumeirah Lake Towers X1, X2 & X3	-	NEB	Belhasa Engineering & Contracting	138,536.90
2009	Al Durrah Residential Tower on Plot No. 335-142 & 335-340, Trade Center, Sheikh Zayed Road, Dubai	-	WS Atkins & Partners	e.Construct FZ LLC/DCC	82,149.39
2009	2B+G+1P+HC+25F Residential Tower on Plot No. MS.006 & MS.014 @ IMPZ, Dubai-UAE	-	National Engineering Bureau	CIVILCO	95,079.95
2009	3B+G+14 Floors on Plot No. 373-1323 at Al Barsha First, Dubai	-	-	e.Construct FZ LLC	4,632.00
2009	Proposed (3B+G+45 Floors) Multi Function Bldg. with Podiums @ DIC on Plot No. B-001-011(SIDRA TOWER)	-	RSP Architect, Planners & Engineers (PTE) Ltd.	Ali & Sons Co. (LLC)	56,249.00
2009	B+G+45 Floors On Plot No. 345-249, Sheikh Zayed Road, Dubai, UAE	-	ARKITEKNIK Int'l. Consulting Engineers	e.Construct FZ LLC	31,989.00
2009	CHURCHILL TOWERS, BUSINESS BAY BB.A05.002	-	Design & Architectural Bureau (DAR)	Oger Dubai (L.L.C)	193,802.94
2009	Marina Wharf 1 (2B+g+27Floors+R) on Plot No. 7u (392-401)	-	Dimension Engineering Consultants	Gammon & Billimoria	25,706.00
2009	Legend Plaza Residential Apartments on Plot No. 125-170, Riggat Al Buteena @ Dubai, UAE	-	Adnan Saffarini	Binladin Contracting Group	15,877.97

AWARDED JOBS IN DUBAI, UNITED ARAB EMIRATES



YEAR	PROJECT NAME	CLIENT	CONSULTANT	MAIN CONTRACTOR	AREA (sq m)
2009	(G+3+Roof) for Mr. Hamad Al Arif @ Al Warqaa, Dubai on Plot No. 421-735 Al Arif Job. No. 403	-	-	Al Arif Contracting Co.	5,314.60
2009	Laguna Tower - Jumeirah Lake Towers at Plot A2	-	AL GURG Consultants	China State Construction	60,752.06
2009	2B+G+P+25 Comm/Res. Bldg. on Plot No. 231-130, Al Nahda 1st, Dubai	-	Design & Architectural Bureau (DAR)	Gammon & Billimoria	38,511.00
2009	Business Tower on Plot BB.A.05.012	-	ARCHON	CSHK	35,696.00
2009	(4B+G+44) Office Bldg on Plot No. 1 2 @ Jumeirah Lake Towers	-	DAR	Al Shafar Trans.	56,497.00
2009	Skycourt Dubailand Residential Complex	-	LACASA	China State Construction Engineering Corporation	424,033.00
2009	XL Tower on Plot BB.A05.010, Business Bay, Dubai	-	Conin	CSHK	27,496.88
2009	Iris Bay Tower ON PLOT NO.: B.B.A.02.005 @ BUSINESS BAY, DUBAI, UAE	-	WS Atkins	Al Habtoor	29,102.00
2009	B+G+4 Floors KHDA Head Quarters at Plot KV5-001-006, Academic City, Dubai UAE	-	DAR Consultant	Al Basti & Mukhta	15,029.00
2009	Labour Camp on Plot No.: 597-718 @ Dubai Investment Park.	-	-	Dubai Future Construction L.L.C	5,049.00
2009	B+G+21 Floors Commercial & Residential Development Al Nahda First Dubai	-	ARKITEKNIK Int'l. Consulting Engineers	BIN BELAILA CONTRAC-TING L.L.C.	31,924.28
2010	Bilhab Tower	-	ARKITEKNIK Int'l. Consulting Engineers	ANC	22,208.85
2010	(3B+G+32 Floors) 2Y Residential Tower Dubai Marina, Dubai	-	NOOR Group	e.Construct FZ LLC	21,245.00
2010	Park Towers at DIFC	-	Engineering Consultant Group (ECG)	Shapoorji Pallonji Mideast LLC	138,598.00
2010	G+6 Building on Plot No. 421 - 458 @ Al Warqa 1st - Dubai	-	Adwar Engineering Consultant	Al Arif Contracting Co.	6,569.00
2010	Kingdom of Sheba Development Phase 1	-	Ace International	e.Construct FZ LLC	83,888.00
2010	Al Hikma Tower @ Shk. Zayed Road	-	Arex Engineering Consultant	China State Construction Engineering Corporation	23,174.78
2011	Palm Jumeirah Sofitel Resort Hotel, Plot No. PJCR C28 & 29, Dubai, UAE	-	-	Evan Lim - Penta Construction Co. LLC	991.25
2011	Residential buildings (4B+GP+12+SP+Gym) Laleh Tower & Nilaoofar Tower on Plot No. A003 & A004 @ Jumeirah Lake Towers, Dubai	-	Arenco	Sun Engineering	23,104.97
2011	Elite Residence	-	ADNAN SAFFARINA	Arabian Construction Co.	98,435.01
2011	Burj Residential Towers on Plots 50 & 51 - Dubai	-	-	Arabian Construction Co.	52,434.28
2011	Conrad Hotel on Plot No. 335-108 & 335-157 Sheikh Zayed Road, Dubai	-	WS Atkins	e.Construct FZ LLC/DCC-Arabtec JV	-
2011	Dubai Mixed Use - Shaikh Zayed Road, Dubai	-	KEO International Consultants	Arabian Construction Co.	101,175.21
2011	Suburbia Downtown, Dubai Uai	-	Architecture and Planning Group	Shapoorji Pallonji Mideast LLC	52,221.33
2011	G+6 Typical + Gym @ Al Warqa First, Dubai, UAE	SHAIKHA,ALI,MUNA,IBTASAM,HESSA&K HALID ABNAA YOUSAF MOHAMED ORABALDOWAIS & MOAZA ALI	Al Asri Engineering Consultant	Distinguished Performance Contracting LLC	4,183.00
2011	3B+G+3P+19 DEC Business Tower on Plot No. BB.A06.005 at Business Bay, Dubai UAE	-	Architectural & Engineering Innovations Bureau	ANC Contracting LLC	10,302.48
2011	2B+G+13 story Swimming Pool Commercial / Residential Building on Plot No. 682-133, Zone C2-2 @ Dubai Sports City, Dubai UAE	-	Archgroup	Gammon & Billimoria	-
2011	2B+G+6 Typical Floors Office Building on Plot No.: 373-111 @ Al Barsha-1, Dubai UAE	Nakheel	Mazaya Consulting Engineers	Faya Construction Co. (Kele Cont. Co.)	18,163.15

AWARDED JOBS IN DUBAI, UNITED ARAB EMIRATES



YEAR	PROJECT NAME	CLIENT	CONSULTANT	MAIN CONTRACTOR	AREA (sq m)
2011	3B+G+6 Typical Floors Office Building on Plot No.: 373-1368 @ Al Barsha-1, Dubai UAE	Nakheel	Mazaya Consulting Engineers	Faya Construction Co. (Best Cont. Co.)	10,698.62
2012	Marina Mosque, Dubai, UAE	-	Access Engineering Consultant	Modern Executive Systems Contracting	1,583.39
2012	Burj dubai Development on Plot 29 & 30, Dubai	-	RICE PERRY ELLIS	BESIX-ARABTEC JV	61,000.00
2012	Pier 8 Residential Development Plot No.: 392-318 @ Dubai Marina, Dubai	-	-	Modern Executive Systems Contracting	25,643.02
2012	2B+G+24 Residential and Commercial Building on Plot No. 231-115 at Al Nahda 1st, Dubai	HE Mr. Mattar Mohamed Ahmed Al Tayer	Dar Consult	Bu Haleeba Contracting LLC	44,858.00
2012	29 Boulevard - Burj Dubai Development, Plots 55, 56 7 57, Dubai, UAE	-	Hyder Consulting (ME) LTD.	Al Futtaim Carillion	67,328.37
2012	Lawns 4 Residential Building, Jumeirah Village, Dubai, UAE	Minas General Trading Est.	Dimensions	Al Aroma International Building Contracting LLC	10,467.59
2012	G + 2, 7 Villas on Plot No. AA-O-001 at Tecom Site B	-	M/s BH.NS Engineering Consultancy	Modern Executive Systems Contracting LLC	2,170.00
2012	Dubai Police Headquarters Project (DPHQ) Al Awir, Dubai, UAE	Dubai Police	Kling Consultants	City Engineering & Contracting	47,666.15
2013	4B+G+44 Al Attar II on Plot B-001-014	-	Gulf Engineering and Consultants	The Arab Contractors	55,401.98
2013	Dolce Vita Tower at Dubai Marina	-	Dimension Engineering Consultants	Sun Engineering	27,191.43
2013	G+3+R Labor Accomodation Building, Dubai	-	-	East Sky Building Contracting	15,301.00
2013	Marina Wharf 2 (2B+G+27Floors+R) Dubai Marina District 7, Dubai	-	Dimension Engineering Consultants	Gammon & Billimoria	26,088.28
2013	Agora Shopping Mall	-	Access Engineering Consultant	Modern Executive Systems Contracting LLC	61,000.00
2013	Dream Tower (4B+GF+2M+40) @ Plot no 392-287, Dubai Marina, Dubai, UAE	Emirates Islamic Bank	National Engineering Bureau	S. S. Lootah Contracting Co.	43,119.23
2013	Habtoor Island Resor and Spa (Plot C-34)	Al Habtoor Group	Khatib and Alami Consolidated Engineering Company	Al Shafar General Contracting LLC	47,998.00
2013	3B+G+M+16+R Bldg on Plot No T003 at TECOM, Dubai (HILLIANA)	Abyaar Real Estate Development	BH. NS Engineering Consultancy	Modern Executive Systems Contracting LLC	21,781.00
2013	G+8 Building on Plot No. RB-002 at Tecom	MR. MAZROUK RASHED AL RASHDAN	BH. NS Engineering Consultancy	Modern Executive Systems Contracting LLC	7,031.00
2013	B+G+12 (R10) from the Proposed 12 Residential Bldg	Tanmiyat Global real Estate Development LLC	-	DELTA AL EMARATE BLDG. CONT. LLC	20,705.63
2013	Dubai International Airport Expansion (Phase III)	Dubai Aviation City Corporation	DAR/ADPI-JV	Al Jaber L.E.G.T. Engineering and Contracting (ALEC) LLC	-
2013	G+12 Car Park Building	RAYADAH INVESTMENT COMPANY	Al Turath Engineering Consultants	OST Constructional Projects	17,142.70
2013	G+2, 7-Villas on Plot No. AA-O-001 at Tecom Site b, Dubai, UAE	Abyaar Real Estate Development	BH. NS Engineering Consultancy	Modern Executive Systems Contracting LLC	2,170.00
2013	Burj Dubai Development - The OTCI Café	EMAAR	Extreme Line	Besix - Arabtec JV	222.00
2013	Residential Villa (B+G+1), Umm Al Sheif, Dubai, UAE	Saleh Ahmed Al Roud	Mazaya Consulting Engineers	Al Qabdash Building Contracting LLC	2,867.00
2013	Eni Coral Tower (B+G+3P+16Typ+Roof)	Emirates National Investment	Al Suweidi Engineering Consultants Bureau	OST Constructional Projects	19,739.00
2013	Light Maintenance Hangars	EMIRATES	Derpy Design Consulting Engineers	National Wheel J&P LLC (WJ & P)	1,877.03
2013	Residential bldg R9, wadi al Safa-3 Dubai	Tanmiyat Global real Estate Development LLC	Al Ajmi Engineering Consultants	Delta Emirates	20,705.63
2013	G+1 Private Villa , plot no 367-1012 umm el sheif	-	dxb.lab Architecture	E construct	814.94

AWARDED JOBS IN DUBAI, UNITED ARAB EMIRATES



YEAR	PROJECT NAME	CLIENT	CONSULTANT	MAIN CONTRACTOR	AREA (sq m)
2013	G+4 Staff Housing	Bright Star	DXB.LAB Architecture	DCC/E construct	468.85
2013	3 Café – Grand Café, Promenade café and Kiosk at Dubai Mall	M./s. Emaar Properties	M/s. BH.NS Engineering Consultants	Al Ahmadiyah Contracting and Trading	1,129.10
2013	B+G+12 Propossed Residential Bldg R3 wadi al Safa-3 Dubai	Tanmiyat Global real Estate Development LLC	Al Ajmi Engineering Consultants	Delta Al Emarate Building Contracting LCL	26,538.70
2013	B+G+12 Propossed Residential Bldg R4 wadi al Safa-3 Dubai	Tanmiyat Global real Estate Development LLC	Al Ajmi Engineering Consultants	Delta Al Emarate Building Contracting LCL	29,994.70
2013	B+G+12 Propossed Residential Bldg R5 wadi al Safa-3 Dubai	Tanmiyat Global real Estate Development LLC	Al Ajmi Engineering Consultants	Delta Al Emarate Building Contracting LCL	35,178.70
2013	B+G+12 Propossed Residential Bldg R2 wadi al Safa-3 Dubai	Tanmiyat Global real Estate Development LLC	Al Ajmi Engineering Consultants	Delta Al Emarate Building Contracting LCL	56,533.40
2013	THE PALM JUMEIRAH VILLA PLOT NO .PJFRFTPO3 AT NAKHLAT JUMEIRAH DUBAI	H.H INVESTMENTS & DEVELOPMENTS	E CONSTRUCT	E CONSTRUCT	2,154.00
2013	Al Badia Phase 3 Part II	DFC-Al Futtaim	Archcorp	AMB Building	29,800.20
2013	Stadium Point	VASCON TRADING LTD.	CHAWLA ARCHITECTURAL & CONSULTING ENGINEERS	GAMMON AND BILLIMORIA	28,975.00
2013	VILLA PERA AND VILLA MYRA AT JUMEIRAH VILLAGE, DUBAI, UAE	G&G PARTNERS	HIGH ART ENG.CONSULTANTS/ASSOCIATED CONSULTING ENGRS. INT'L	CHINA STATE CONSTRUCTION CORPORATION	20,311.30
2013	Prop. 5B+G+3P+45+1Mech Office Bldg. on Plot No. BB.A03.005 Site BB-A	Ahmed Abdurahem Al Attar	National Engineering Bureau	Al Attar	139,828.00
2014	COURT TOWER	SULAYMAN ABDULAZIZ N. ALMAJED	AL HAZMI	DELTA AL EMARATE BUILDING CONTRACTING CO. LLC	48,737.00
2014	Proposed B+G+14 residential bldg plot no 6457563, Bldg. R1 wadi al Safa-3 Dubai	Tanmiyat Global Real Estate Development LLC	Al Ajmi Engineering Consultants	Delta Al Emarate Building Contracting LCL	20,705.64
2014	Proposed B+G+14 residential bldg plot no 6457563, Bldg. R12 wadi al Safa-3 Dubai	Tanmiyat Global Real Estate Development LLC	Al Ajmi Engineering Consultants	Delta Al Emarate Building Contracting LCL	20,705.64
2014	VICEROY HOTELS RESORTS RESIDENCES PALM JUMEIRAH, DUBAI, UAE	ASSAS INVESTMENT LTD.	P&T ARCHITECTS AND ENGINEERS LTD	CHINA STATE ENGINEERING CORP. LLC	99,754.00
2014	Proposed B+G+14 residential bldg plot no 6457563, Bldg. R6 wadi al Safa-3 Dubai	Tanmiyat Global Real Estate Development LLC	Al Ajmi Engineering Consultants	Delta Al Emarate Building Contracting LCL	33,450.70
2014	Proposed B+G+14 residential bldg plot no 6457563, Bldg. R7 wadi al Safa-3 Dubai	Tanmiyat Global Real Estate Development LLC	Al Ajmi Engineering Consultants	Delta Al Emarate Building Contracting LCL	38,634.70
2014	Proposed B+G+14 residential bldg plot no 6457563, Bldg. R8 wadi al Safa-3 Dubai	Tanmiyat Global Real Estate Development LLC	Al Ajmi Engineering Consultants	Delta Al Emarate Building Contracting LCL	38,634.70
2014	PROPOSED B+G+2 OFFICE BUILDING OLOT NO. 232-0280 AL QUSAIS FIRST, DUBAI, UAE	AL FALAH PLAZA	DESIGN AND ARCHITECTURE BUREAU	SALEH CONSTRUCTION	13,999.00
2014	5B+G+34F RESIDENTIAL AND COMMERCIAL BUILDING ON PLOT 392-499, DUBAI MARINA	BRIGHT REAL ESTATE	NATIONAL ENGINEERING BUREAU	TRANSEMRATES	31,675.70
2014	VOLANTE TOWER DUBAI PROJECT (B+G+26 FLOORS RESIDENTIAL TOWER) PLOT NO. 346-545, BURJ KHALIFA, DUBAI, UAE	XTREME VISIONS	FNP ARCHITECTURE AND ENGINEERING	ARABIAN CONSTRUCITON CO.,	34,539.65
2014	PROPOSED PRIVATE VILLA	ABDULHAMID AHMAD QASSIM SEDDIQI	ERGA PROGRESS ENGINEERING CONSULTANTS	DUBAI CONTRACTING COMPANY LLC	1,352.00
2014	CORPORATE TOWER	JUPITER HOLDINGS LIMITED	AL HAWRAA ENGINEERING CONSULTANTS	GOLDLINE CONTRACTING LLC	94,098.00
2014	SILVER STALLION TOWERS	STALLION DEVELOPMENTS LTD.,	DUBAI CONSULTANTS	GOLDLINE CONTRACTING LLC	54,079.00
2014	G+8 HEALTH CLUB RESIDENTIAL BUILDING, PLOT 11-019, DUBAI SILICON OASIS	MR. SHAFIQ AHMED SALEH ABDUELHAMID	NATIONAL ENGINEERING BUREAU	CITY ENGINEERING	9,561.00
2014	G+9 HEALTH CLUB RESIDENTIAL BUILDING, PLOT26-071, DUBAI SILICON OASIS	MR. SHAFIQ AHMED SALEH ABDUELHAMID	NATIONAL ENGINEERING BUREAU	CITY ENGINEERING	12,529.80
2014	DAMAC TOWERS BY PARAMOUNT	DAMAC STAR PROPERTIES LLC	KEO	TAV CONSTRUCTION	179,230.01
2014	JEWEL OF THE CREEK	DUBAI INTERNATIONAL REAL ESTATE	BRANCH OFFICE DUBAI	HLG	27,809.00

AWARDED JOBS IN DUBAI, UNITED ARAB EMIRATES



YEAR	PROJECT NAME	CLIENT	CONSULTANT	MAIN CONTRACTOR	AREA (sq m)
2014	AL BARARI DEVELOPMENT PHASE II - 7TH HEAVEN	ABWAB	WSP	SUSTAINABLE BUILDERS	63,884.52
2014	SWISS INTERNATIONAL SCHOOL	-	WME CONSULTANTS	AL AHMADIAH CONTRACTING AND TRADING	14,880.00
2014	B+G+13 RESORT HOTEL BUILDING ON PLOT PJTRH02 AND PJTRH03 AT PALM JUMEIRAH, DUBAI, UAE	MR. ABDULLA AHMAD AL MOOSA	ARENCO	CHINA STATE ENGINEERING CORP. LLC	147,001.64
2014	THE ADDRESS RESIDENCE SKY VIEW	EMAAR PROPERTIES PJSC	NORR ARCHITECTS ENGINEERS PLANNERS	ARABIAN CONSTRUCTION COMPANY	116,879.00
2014	PROPOSED COMMERCIAL AND RESIDENTIAL BUILDING ON PLOT NO. 3160550 AT AL RAFFA, DUBAI, UAE	MUHAMMED AND OABID AL MULLA LLC	ARIF AND BINTOAK CONSULTING ARCHITECTS AND ENGINEERS	DHAFIR DEVELOPMENT AND CONTRACTING LLC	28,476.00
2014	AL AIN AHLIA DUBAI HOTEL 'PLOT NO. 1258213, RIGGAT, AL BUTEEN, DUBAI, UAE	AL AIN AHLIA INSURANCE	GA ARCHITECTS AND ENGINEERS AND CONSULTANT	DHAFIR DEVELOPMENT AND CONTRACTING LLC	22,914.00
2015	Hilliana Tower (2B+G+3P+45+Roof Floor) at Plot A-TT-003 at Acacia Avenues - Dubai			MESC	
2015	Al Fattan Tower, Umm Ramool Dubai Plot No. 2150458	AL FATTAN	AE7	DELTA EMIRATES	49,985.50
2015	The Polo Residence, Nad Al Shiba First, Prototype 1 & 2	IGO	ARCH CORP ARCHITECTURAL ENGINEERING	Technical Architec Contracting	133,880.00
2015	Suites in the SKAI	Unlimited 1 Limited	WS Atkins & Partners Overseas	China State	116,095.00
2015	B+G+13+R RESORT HOTEL- PLOT ID: PJTRH03	Mr. Abdullah Ahmad AlMoosa	ARENCO	China State Construction Engineering L.L.C.	2,070.00
2015	B+G+13+R RESORT HOTEL- PLOT ID: PJTRH02	Mr. Abdullah Ahmad AlMoosa	ARENCO	China State Construction Engineering L.L.C.	2,070.00
2015	HAMENI TOWER	NAZROD LIMITED	P&T ARCHITECTS AND ENGINEERS LTD.	CSCEC	96,800.00
2015	Swiss International Scientific School of Dubai-Phase 2-Sports Block			Al Ahmadiyah Contracting & Trading	
2015	Fountain Views	EMAAR PROPERTIES PJSC	DEWAN	Arabian Construction Co. (ACC)	56,175.00
2015	Al Habtoor Residence	Dubai National Investment Co. LLC	WS ATKINS & PARTNERS OVERSEAS	Habtoor Leighton Group	90,651.00
2015	Ashjar Canopy Living	Abwab Real Estate	WSP	Sustainable Builders	42,984.50
2015	Akoya Artesia	Damac	Engineering Consortium	China State Construction Engineering Corporation	116,065.00
2015	Proposed Residential Building -R6	Tammiyat Global Real estate Development (L.L.C.)	Al Ajmi Engineering Consultants - Dubai	Delta Al Emarate Building Contracting L.L.C.	40,175.40
2015	Proposed Residential Building -R7	Tammiyat Global Real estate Development (L.L.C.)	Al Ajmi Engineering Consultants - Dubai	Delta Al Emarate Building Contracting L.L.C.	33,975.40
2015	Proposed Residential Building -R8	Tammiyat Global Real estate Development (L.L.C.)	Al Ajmi Engineering Consultants - Dubai	Delta Al Emarate Building Contracting L.L.C.	28,792.30
2016	Enterprises Command And Control Center (EC3) Building (G+5) On Plot No. 2150246 Umm Ramool, Dubai, UA	Roads & Transport Authority	Eng. Adnan Saffarini	AL Shafar General Contracting LLC	
2016	Academic Medical Centre	Fakeeh Academic Medical Centre	Studio Altieri S.P.A.	Habtoor Leighton group	52,819.00
2016	OIA RESIDENTIAL DEVELOPMENT (G+5 on Plot 674-291) Motor City ,Dubai	Union Properties	Conin Incorporated Consultants	CSCEC	48,013.00
2016	Enterprises Command And Control Center (EC3) Building (G+5) On Plot No. 2150246 Umm Ramool, Dubai, UAE	Roads & Transport Authority	Eng. Adnan Saffarini	AL Shafar General Contracting LLC	9,665.21
2016	Academic Medical Centre	Fakeeh Academic Medical Centre	Studio Altieri S.P.A.	Habtoor Leighton group	26,792.00
2016	OIA RESIDENTIAL DEVELOPMENT (G+5 on Plot 674-291) Motor City ,Dubai	Union Properties	Conin Incorporated Consultants	CSCEC	48,013.00
2016	Private villa on plot no. PJFRFTP03 Nakhlal Jumeira	H.H Investemnt & Developmets	ERGA	DCC	168.50

AWARDED JOBS IN DUBAI, UNITED ARAB EMIRATES



YEAR	PROJECT NAME	CLIENT	CONSULTANT	MAIN CONTRACTOR	AREA (sq m)
2016	Al Jadaf Hotel	Abdullah Hasan Abdullah, Amir Ahmed Mohamed Abughazaleh	ERGA	e.Construct	8,002.14
2016	Hotel and Residential Tower on Plot # 3935794, Al Thanyah Fifty, Dubai (4B+G+46F+1 Service Floor Hotel & Residential Tower) for Signature	Signature Residence Limited	ARCHGROUP	ASGC	43,295.40
2016	Akoya Carson Plot no. 676-5407, Dubai, UAE -tower A , B & C	DAMAC	Ultra Architectural Consultancy	Al Arif	136,906.30
2016	G+3P+HC+31+2M+R Hotel Building Plot no. T-004	H.E Abdulhamid Abdulfatah Kazim, Mohamed Saleh Mohd Ahmad Almulla	Inspiration Consulting Engineers	Modern Executive System Contracting LLC (MESC)	40,188.00
2016	PROMENADA MALL - DESIGN REVIEW				-
2016	Swiss International Scientific School - Phase 3	Swiss Education Partners	WME	Al Ahmadiyah Contracting & Trading	17,534.60
2016	Agora Mall	ARJ GROUP	ACCESS ENG'G CONSULTANCY	Ghantoot Gulf Contracting	35,199.00
2016	PROPOSED 5B+SERVICE+CONCOURSE+8+STOREY COMMERCIAL DEVELOPMENT	DIFC	LACASA	KHANSABEH CIVIL ENGINEERING LLC	17,655.00
2016	OPERA GRAND TOWER PROJECT	EMAAR	KHATIB & ALAMI	AL GHANDI AND CONSOLIDATED CONTRACTORS INTERNATIONAL COMPANY JV	48,702.00
2016	Residential & Commercial Tower on plot no. 345-883 at Burj Khalifa			SHAPOORJI	
2016	Town square - Proposed B+G+Podium+17+Roof Residential & Commercial Plot no. 922-8918, Al Yasmeen, Dubai, UAE	NSHMI DEVELOPMENT LLC	AL-GURG	SHAPOORJI PALLONJI	126,747.70

AWARDED JOBS IN OTHER COUNTRIES



YEAR	PROJECT NAME	CLIENT	CONSULTANT	MAIN CONTRACTOR	AREA (sq m)
2008	Shahba Mall, Syria	-	Bishr Consultant	Kurdi Group / Syrian Jordanian	11,000.00
2008	Al Mamoon Exchange and Telecommunication Center, Iraq	-	-	Alfa Consult	17,123.50
2009	Factory & Admn. Bldg., Egypt	-	-	Docu Tec Egypt	3,734.00
2009	Arabcom Showroom, Cairo, Egypt	-	-	-	8,748.00
2010	United Tower Project, at Sharq BP 4, Kuwait	-	SSH	Ahmadiyah Con. & Trading Co.	44,884.95
2013	Elorman Building, Cairo, Egypt	-	-	EGTCON	11,826.00

AWARDED JOBS IN OMAN

YEAR	PROJECT NAME	CLIENT	CONSULTANT	MAIN CONTRACTOR	AREA (sq m)
2013	Residential and Infrastructure PCKG for Ras Al Hamra, Oman	Ras Al Hamra	KEO International	Al Turki Enterprise	17,258.00
2015	CITY HOTELS – MUSCAT	OMRAN	COWI & PARTNERS LLC	LARSEN AND TOUBRO (OMAN) LLC	41,576.00

AWARDED JOBS IN JORDAN



YEAR	PROJECT NAME	CLIENT	CONSULTANT	MAIN CONTRACTOR	AREA (sq m)
2005	Abu Tawileh Plaza	-	Symbiosis Design Ltd.	Al Wajih Contracting Establishment	-
2005	MECCA MALL	-	Al-Basheer Consultants	Kurdi Group	45,115.00
2005	Mecca Mall Extension - Phase 2	-	Al-Basheer Consultants	Kurdi Group	-
2006	Sadeen Amman Hotel Extension	-	ACE	Sadeen Contracting	-
2006	Sadeen Amman Hotel Extension	-	-	Sadeen Hotel	4,605.00
2007	Abdul Fattah Al Faouri Office Building	-	Hajjiri & Associates	Al Wajih Contracting Establishment	3,301.00
2007	Al Rawashdeh Commercial Building	-	Faris J. Bagaeeen Consultants	Al Wajih Contracting Establishment	-
2007	WADI SEER ON PLOT 145 & 146 - JORDAN	-	-	Al Hussein Group	19,256.00
2007	National Paints Factory, Amman Jordan	-	-	Wajih Contracting Establishment	7,020.00
2007	Commercial Centre for Mr. Abdul Hadi Al Majali	-	Al Hussein Group	Al Hussein Group	-
2007	Arab Bank in Abdoon, Amman - Jordan	-	Al-Khalidy Engineering	Costandy Nuqul & Partners Company	1702.57
2007	AL Hamshari Group Building, Amman Jordan	-	Tahaan & Boshnaq	Al Wajih Contracting Establishment	8000
2007	Al Wahah Alkadra Commercial Building	-	Faris J. Bagaeeen Consultants	Al Wajih Contracting Establishment	1,770.93
2007	Abdoun Building	-	Kurdi & Ashlak	Maysarah Daher and Brothers	2,175.00
2007	Commercial Center for Mr. Taha Al Hussein and Partners, Amman, Jordan	-	Al Hussein Group	Al Hussein Group	-
2008	Commercial Building, Amman Jordan	-	-	Petra Elevators Company	1,328.55
2008	Islamic Hospital, Aqaba - Jordan	-	Consultant Group	AL FADEL CONTRACTING COMPANY	31,343.92
2008	Forum Mall Abdoun - Jordan	-	-	Wajih Contracting Est.	1,270.00
2008	Sara Complex, Amman - Jordan	-	-	Al-Thulathia Est. for Contracting	4,868.91
2009	The Boulevard Project @ Abdali Amman, Jordan	-	Laseco	Masar - Mid Joint Venture	187,578.55
2009	Express Hotel	-	WS Atkins	Engineering Enterprises Company	13,774.95
2009	Office Building for Mr. Wael Ghanameh, Amman Jordan	-	-	A.F. Ghanameh Contracting	7,101.90
2009	Medium Voltage Substation, Abdali-Amman, Jordan	-	Consolidated Consultants CC	Masar United Construction Company	2,717.65
2010	Zaha & Nasira Al Kurdi Complex	-	-	Zaha & Nasira	3,422.02
2010	Jameel Mswadeh Commercial Building, Amman, Jordan	-	-	Jameel Mswadeh	4,391.13
2010	Diamond Plaza - Amman Jordan	-	-	Integrated Construction Co.	3,416.77
2011	Raya Offices Plaza in Aqaba, Jordan	-	-	Omar Abu Sa'ad	22,204.63
2011	Champs Elysees, Amman Jordan	-	-	Ali Barakat and Sons (Barakat Contracting Est.)	6,832.67

AWARDED JOBS IN JORDAN



YEAR	PROJECT NAME	CLIENT	CONSULTANT	MAIN CONTRACTOR	AREA (sq m)
2011	Al Hussein - Amazon River, Amman - Jordan	-	-	Al Hussein Group	40,598.77
2011	JO PARK, JORDAN	-	-	Green Line Contracting	6,913.15
2011	Middle East Insurance Company Building, Amman, Jordan	-	-	Mutah Contracting	23,026.88
2011	Tonya Assouad, Amman, Jordan	-	-	Zabaneh Contracting	7,625.80
2011	3D1 Matrix Apartmenrt in Jordan	-	-	Maisam Architects & Engineers	11,210.00
2011	Residential Building in Amman @ Al Abdali Area on Plot No. C1, C2, & C3 Block A for Al Maouj Investment & Development Company	-	-	e.Construct FZ LLC	50,958.60
2011	Amman Rotana Hotel - JORDAN	-	-	Arabian Construction Co. Lebanese Ltd.	-
2011	PEPSI CO. RAW MATERIALS WAREHOUSE EXPANSION	Jordan Ice & Aerated Water Co. LTD (PepsiCo)	Sigma Consulting Engineers	NINO CONSTRUCTIONAL ENGINEERS AND CONTRACTORS	2,370.55
2012	EEC Office, Amman, Jordan	-	-	Engineering Enterprises Company	2,251.51
2012	Al Ramini Commercial Complex, Amman, Jordan	Raed Al Ramini	Thaer Quba' Architects and Consultants	Raed Al Ramini	1,642.35
2012	Taiwan Embassy	ASAS Project Management and Consultancy	-	MECC (Madi Engineering and Contracting Company)	901.85
2012	3D3 Office & Retail Bldg.	-	Laceco Jordan Architects & Engineers	Babel Contracting co	3,160.38
2012	Hilton Dead Sea Resort & Spa, Jordan	Dead Sea Resorts	Arabtech Jardaneh Engineers and Architects	Unec / El Concorde JV	7,858.53
2012	Abdali Central Market	Abdali Central Market	Arabtech Jardaneh	Habash Deir Contracting Company	120,468.00
2012	Irbid, City Center	Khalid Abu Hassan	MOUNIR HAJRI & ASSOC	HAWWARI CONT. CO.	59,240.80
2012	Ghanameh Building, Jordan	-	-	Abdul Fattah Al Ghanameh Contracting Establishment	4,075.51
2012	Sama for Investment and Trading Depots	Sama for Investment and trading Depots	Arabtech Jardaneh Engineers and Architects	Massanat Engineering & Contracting Company	5,573.96
2012	Damac Residential Development, Abdali, Jordan	DAMAC	-	El Concorde Construction	60,696.00
2012	Ikea Astore, Amman Jordan	Union Land Development Company (ULDC)	First Le Cercle Co. Consulting and Engineering	Union Land Development Company	56,697.00
2012	Champions of Change School and Church, Jordan	-	Nimat Nimri Consulting Engineers	National Christian and Missionary Alliance Church - Jordan	7,066.36
2012	Abdali Central Market Place - Phase 2 (Mall)	Abdali Development	Arabtech Jardaneh Engineers and Architects	Abdali Development	78,683.00
2012	FAIRMONT HOTEL, Amman Jordan	Tanmiyat Global real Estate Development LLC	ASAS Engineering Bureau	INJAZ for Investment and Development	62,590.00
2013	Hyatt Regency Aqaba Hotel	AYLA	Arabtech Jardaneh	Haddadin Engineering Company for Contracting	7,098.00
2013	Samir Khoury Commercial Building	Samir Khoury	Faris Bagaeen Consultants	Hussein Miqdadi and Partners Co.,	7,211.23
2013	St. Regis – Branded Apartments - Al Maabar	AL-Mabaar	Arabtech Jardaneh	Arab Towers Contracting Company (ATCCO)	34,706.00
2013	Saraya Amman Hotel and Tower Project	Saraya Abdali Real Estate Investment Company	e.Construct	Dubai Construction Company LLC	63,553.98
2014	Abd Al Hamid Hyasat Building	Abd Al Hamid Hyasat	Andalousiah Office	Andalousiah Office Consulting Engineering And Architects	2,285.80
2014	Zone L-Office Building -Saraya Aqaba	Saraya Aqaba PSC	Arabtech Jardaneh	ABU SAAD ENGINEERING AND CONTRACTING EST.	19,052.70
2014	Apartment Building - Marsa Zayed	Al Maabar Aqaba Real Estate Development Company	Maisam Architects Engineers	ABU SAAD ENGINEERING AND CONTRACTING EST.	53,175.37
2014	CHOCOLATE FACTORY	MR. MAJDI QORA AND PARTNERS	ENGINEERING SOLUTION AND CONSULTING	ESC ENGINEERING	3,478.00

AWARDED JOBS IN JORDAN



YEAR	PROJECT NAME	CLIENT	CONSULTANT	MAIN CONTRACTOR	AREA (sq m)
2014	SOUK HOTEL - B05A - AYL A	AYLA	ARABTECH JARDANEH	HADDADINCO ENGINEERING CO. FOR CONTRACTING	5,654.10
2014	OFFICE BUILDING - AMARA	MR. MUSTAFA AMARA AND PARTNERS	ENG. IMAD AL-DABBAS	ABDULFATTAH AL GHANAMEH CONTRACTING ESTABLISHMENT	2,746.40
2014	AL ADEYAT MALL	KURDI GROUP	ENGINEERING SOLUTIONS AND CONSULTING	KURDI GROUP	90,822.30
2015	Sec 1d - Kawar Building	Kawar Group	Symbiosis Design Ltd.	Sheiha Engineering and Contracting Co.	16,215.00
2016	INTERNATIONAL COMMUNITY SCHOOL SECOND EXTENSION	INTERNATIONAL COMMUNITY SCHOOL	INTERNATIONAL DESIGNERS	IMKAN For Multi Construction Enterprises L.L.C	2,004.60
2016	Le Gray Hotel, Amman, Jordan	Madaen Al Abdali	Consolidated Consultants	Madaen Al Abdali FOR Investment and Real Estate Development PSC	37,555.68
2016	APARTMENT BUILDING	AL MAABAR AQABA REAL ESTATE DEVELOPMENT COMPANY	MAISAM ARCHITECTS ENGINEERS	ABU SAAD ENGINEERING AND CONTRACTING EST.	-
2016	CAPITAL BANK-ABDOUN	CAPITAL BANK	Engineering Solutions & Consultants		486.00
2016	Al Adiyat Machinery Trading Building, AMMAN, JORDAN	Al Adiyat Machinery Building	ESC	Arab Towers Contracting Company (ATCCO)	4,530.10
2016	NATIONAL PAINTS FACTORY - DESIGN VERIFICATION WORKS	CANNING INDUSTRIES CO. (AL SAYEGH GROUP)	-	CANNING INDUSTRIES CO. (AL SAYEGH GROUP)	-

AWARDED JOBS IN KUWAIT



YEAR	PROJECT NAME	CLIENT	CONSULTANT	MAIN CONTRACTOR	AREA (sq m)
2010	United Tower Project, at Sharq BP 4, Kuwait	-	SSH	Ahmadiyah Con. & Trading Co.	44,884.95
2013	College of Arts and college of Education Sabah Al Salem University City - Kuwait University, Kuwait	KUWAIT UNIVERSITY - GOVERNMENT OF KUWAIT	Dar Al Handasah	Arabtec-Combined Group JV	10,747.43
2013	Kuwait Investment Authority Project, Kuwait	HE Mr. Mattar Mohamed Ahmed Al Tayer	KEO International	First United	56,112.38
2015	New Al Sabah Hospital	State of Kuwait - Ministry of Health	Soors Engineering Bureau	Shapoorji Pallonji Mideast LLC	85,000.00

AWARDED JOBS IN ABU DHABI AND AL AIN, UNITED ARAB EMIRATES



YEAR	PROJECT NAME	CLIENT	CONSULTANT	MAIN CONTRACTOR	AREA (sq m)
2005	ICL DIABETES CENTER		SEREX	Saudi Oger Emirates Limited LLC	-
2006	BETWEEN THE BRIDGES		KEO	Al Jaber Grinaker	9,792.00
2008	Park Rotana Mix use Development		Al Salaam	Terna SA Group	112,930.00
2008	UAE University New Campus, PPP Development, Al Ain		GHD	Saudi Oger Emirates/Oger Abu Dhabi	176,178.05
2009	UAE University New Campus, PPP Development, Al Ain		GHD	Saudi Oger Emirates/Oger Abu Dhabi	34,439.00
2009	Al Wahda City - 1 Sector E-19 Plot No. P-7C, Abu Dhabi		KHATIB & ALAMI Consolidated Eng'g. Co.	CIVILCO	147,192.21
2009	SHAMS ABU DHABI DEVELOPMENT TWO TOWERS & PODIUM		RW Armstrong / NEB	Arabian Construction Co.	171,764.00
2009	Development of Plot No. 1 Sector W68, Abu Dhabi Bridgeway Mixed Use Development		WS Atkins	Al Husam Group	18,961.00
2009	JW Marriot Abu Dhabi Resort & Spa (Site 276)		OTAK	Al Habtoor Engineering	-
2010	Etihad Towers: Podium Roof at Level 5 - abu Dhabi		Cansult	Arabian Construction Co.	-
2010	Al Bustan Mixed Use Development on Plot C1 (Site 279), Abu Dhabi		Cox Group	Al Habtoor Engineering	29,044.00
2010	Commercial towers residential and Commercial Projects on Plot No. E-40/C-40 & E-40/C-41 at Al Qudra, Danat, Abu Dhabi, UAE		Erga Progress Eng'g. Consultants / GA Architects & Engineers	e.Construct FZ LLC/Dyena Cont. Co.	54,625.00
2010	Abu Dhabi Financial City, Towers 1 - 4, Abu Dhabi		-	Oger Abu Dhabi	164,374.00
2010	Seba Tower for Shk. Hamdan Bin Zayed		Ghazi Awad	Commodore Contracting Company	53,026.55
2010	Office & Residential Tower @ Plot No. C154-C67, Abu Dhabi, UAE		WS Atkins	Ghantoot	17,766.23
2010	Police Head Quarters Building, Area East 25, Abu Dhabi (2B+G+Tower-35 Floors+Roof+Low Rise Building +Prayer Hall)		WS Atkins & Partners	Commodore Contracting Company	59,770.98
2011	Al Bateen Secondary School		Dewan Architects & Engineers	Al Fara'a General Contracting	18,597.98
2011	Nation Towers on Plot C1 to C10, Sector W-44, Abu Dhabi		Keo International Consultants	NPC-Arabtec JV	112,137.93
2011	Borogue Innovation Center, Abu Dhabi, UAE		ECG Eng'g Consultant Group	Associated Construction & Investments Co. LLC (ASCON)	5,207.31
2012	Residential Building, W-59-01 on Plot no. C-20, Abu Dhabi, UAE		APG	Dyena Contracting Company WLL / e-construct	46,670.52
2012	Ruwais Housing Complex Expansion Phase II Ruwais Shopping Mall, Abu Dhabi, UAE	ADNOC	Engineering Construction Group	GDM COSTRUZIONI S.P.A. - Abu Dhabi Branch	27,470.00
2012	The Gate District Towers 3-8, Shams Abu Dhabi at Al Reem Island	Sourouh -Tameer JV	Khatib & Alami/Hill International	Arabian Construction Co.	249,542.48
2012	Abu Dhabi Police GHQ - New Extension, Abu Dhabi, UAE	Abu Dhabi Police GHQ Engineering Projects	Khatib & Alami Consolidated Engineering Company	Benyan Development	10,779.00
2012	Regent Emirates Pearl Hotel		Dennis Lems Architects Associates / Arkan	Arabian Construction Co.	43,515.29
2012	Southern Sun Hotel, Abu Dhabi		Derby Design	China State Construction Engineering Corporation	27,515.00
2012	Central Market Redevelopment - Abu Dhabi (PT Beams)		WS Atkins	Arabian Construction Co.	-
2012	Abu Dhabi Islamic bank Headquarters, Abu Dhabi, UAE	Abu Dhabi Islamic Bank	Keo International Consultants	Al Habtoor Leighton Group	43,953.00
2012	New York University - B Block Works	Mubadala Development Company PJSC	GHD	Al Futtaim Carillion	44,461.00

AWARDED JOBS IN ABU DHABI AND AL AIN, UNITED ARAB EMIRATES


YEAR	PROJECT NAME	CLIENT	CONSULTANT	MAIN CONTRACTOR	AREA (sq m)
2012	PI Staff Accomodation - Ground Level		Engineering Consultant Group	SK Contracting	42,953.52
2012	City of Lights (C2, C3, C10, C10a & C11), Abu Dhabi, UAE		P & T Architects and Engineers Ltd.	China State Construction Engineering Corporation	261,456.37
2012	Leaf Tower, Al Reem Island, Plot RT4 (C6-C7-C8-C9), Abu Dhabi, UAE	Sorouh	Etan Consult Architecture Urban Design	Commodore Contracting Company	177,500.00
2012	Saraya Project Plot No.: C-33, Sector East -12, Abu Dhabi, UAE	Sorouh	E-TAN Consultant Architecture	Commodore Contracting Company	29,845.00
2012	The New Ghanada Palace, Taweela Area, Abu Dhabi	DEP'T OF THE PRESIDENT AFFAIRS	Plan Quadrat M.E.	e.construct FZ LLC / Algeco	23,251.06
2012	Community Mall, Abu Dhabi, UAE	-	Shankland Cox	Nael & Bin Harmal Hydroexport Est.	20,584.40
2012	Bloom Central, Abu Dhabi, UAE	Bloom Properties	Heberger Engineering	Shapoorji Pallonji Mideast LLC	67,036.00
2012	Offices Tower, Abu Dhabi, UAE	HH Shk tahnoon Bin Saeed Bin Shakout Al Nahyan	World Planners Consultants Engineers	Commodore Contracting Company	35,068.00
2012	CAPITAL CENTER RESIDENTIAL TOWER	Island Office Property Holdings LLC	Maisam Architecture and Engineer	ALI & SONS	38,552.63
2012	Petroleum Institute Research Centre at Sas Al Nakhl	ADNOC	-	AL JABER Building LLC	23,789.00
2012	Saraya 2 - Abu Dhabi	SOROUH REAL ESTATE	E-Tan Consultant Architecture	Commodore Contracting Company	34,170.00
2012	Eni Shams Abu Dhabi Tower	Emirates National Investment	Al Suweidi Engineering Consultants Bureau	Emirates Belbadi Contracting Co., Ltd.	35,261.00
2013	Etisalat Date Center	Etisalat	AECOM	Al Sarh Contracting	-
2013	MOHAMMAD AL MUBARAK VILLA, RR4-3, Reem Island, Abu Dhabi, UAE	HE MOHAMMAD AL MUBARAK	MZ ARCHITECTS	DAARY GENERAL CONTRACTING	894.04
2013	Construction, completion and maintenance of Aabar Residential Tower (Plot Shams C-12 Reem Island)	Aabar Properties	Confluence/APG Consultant	Al Rakha Contracting and General Transport LLC	24,680.00
2013	Al Jazeera Tower	Dr. Mana Saeed Ahmed Al Otaiba	Suweidi Engineering Consultants	Ghantoot Transporting and General Contracting Est.,	17,632.00
2013	Four Seasons Hotel Abu Dhabi, UAE	Al Sowwah Square Properties L.L.C. (Subsidiary of Mubadala Development Company PJSC)	Thornton Tomasetti Exmouth House, 3-11 Pine Street London, EC1R 0JH.	Al Futtaim Carillion	37,960.00
2013	Ajyal International School	Abu Dhabi Educaiton Council	Al Suweidi	Al Rakha Contracting and General Transport LLC	18,561.00
2013	Bawabat Al Sharq	BANIYAS INV. & DEV'T COMPANY LLC.	NEB ENGINEERING CONSULTANCY OFFICE	Emirates Link	21,549.00
2013	Al Basma English School	Abu Dhabi Government	Alsuweidi Engineering Consultatns Bureau	Al Firas General Contracting	11,369.01
2013	Etisalat Date Center	Etisalat	AECOM	Al Sarh Contracting	-
2013	MULTI STOREY PARKING STRUCTURE IN SECTOR – E11 ABU DHABI	DEPARTMENT OF TRANSPORT	PARSONS	GULF PRECAST CONCRETE CO. L.L.C.	-
2013	ENEC APARTMENT COMPLEX	EMIRATES NUCLEAR ENERGY CORPORATION	DEWAN	AL JABER	19,370.84
2013	ENI Shams Abu Dhabi Tower	Emirates National Investment	Al Suweidi Engineering Consultants Bureau LLC	Emirates Belbadi National Investment	10,236.00
2014	PI STAFF ACCOMMODATION AT MAQTA AREA	ADNOC	ECG	AL JABER BUILDING LLC	1,443.00
2014	Saraya Building R-14/C34	Al Nahda Investment	James Cubitt and Partners	PIVOT Engineering & General Contracting	28,327.00
2014	FIRST GULF BANK OFFICE BUILDING PLOT C-110 SECTOR E-48, AL GUM AREA, ABU DHABI, UAE	FIRST GULF BANK	ARCHITECTURAL AND ENGINEERING CONSULTANTS	Dhafir Development & Contracting LLC	74,286.00
2014	HARD ROCK HOTEL (SARAYA H24, PLOT C42) ABU DHABI, UAE	AABAR INVESTMENT PJS	HALCROW YOLLES	AL FUTTAIM CARILLION (ABU DHABI) LLC	36,108.87

AWARDED JOBS IN ABU DHABI AND AL AIN, UNITED ARAB EMIRATES



YEAR	PROJECT NAME	CLIENT	CONSULTANT	MAIN CONTRACTOR	AREA (sq m)
2014	AL RAHA BEACH RESIDENTIAL DEVELOPMENT	AABAR INVESTMENT	NORR ARCHITECTS ENGINEERS PLANNERS	GHANTOOT TRANSPORT AND GENERAL CONTRACTING ESTABLISHMENT AND MURRAY & ROBERTS (AUH) LLC JV	62,767.93
2014	MOSQUE AND PERIPHERALS	ABU-DHABI GOVERNMENT	AL SUWEIDI	ROYAL INT'L CONSTRUCTION L.L.C.	1,016.00
2014	INTERNATIONAL INDIAN SCHOOL	INTERNATIONAL INDIAN SCHOOL	AL SUWEIDI	AIROLINK INTERNATIONAL CONSTRUCTION LLC	25,939.30
2014	ABU DHABI TRADE CENTER	SHEIKH SUROOR BIN MOHAMMAD AL NAHYAN	ARENCO ARCHITECTURAL ANG ENGINEERING CONSULTANTS	GHANTOOT TRANSPORT AND GENERAL CONTRACTING	86,706.99
2014	ABU DHABI MARINA BLOOM DEVELOPMENT	ABU DHABI MARINA	KHATIB AND ALAMI	AL SHAFAR GENERAL CONTRACTING LLC	82,204.00
2014	M TOWER	MASOOD DEVELOPMENT	EWAN ARCHITECTURAL AND ENGINEERING CONSULTANCY	EMIRATES BELBADI CONTRACTING CO., LTD.,	54,524.84
2014	PROPOSED MEENA DEVELOPMENT	TAMOUH INVESTMENT LLC	KDI ARCHITECTS	ZELAN HOLDING	10,977.68
2014	B+G+3 SCHOOL BUILDING TO SHEIKH ZAYED PRIVATE ACADEMY	SHEIKH ZAYED PRIVATE ACADEMY FOR BOYS	NATIONAL ENGINEERING BUREAU	AL RAKHA CONT. AND GEN. TRANSPORT LLC	2,012.50
2014	AJYAL INTERNATIONAL PRIVATE SCHOOL Plot No. P2, Sector No. 1A, Zone: Al Falah, Abu Dhabi	ABU DHABI GOV'T - AJYAL INTERNATIONAL SCHOOL - AL FALAH	AL SUWEIDI ENGG CONSULTANTS BUREAU LLC	AL MANSOURI 3B LLC	25,887.88
2014	RESIDENTIAL AND COMMERCIAL TOWER @ PLOT P-5, AREA W-4	FOUNDATION PROPERTY MANAGEMENT	ARCHGROUP	ALI MOOSA	65,185.37
2015	Aabar Residential Tower	AABAR INVESTMENTS PJSC	ARCH. AND PLANNING GROUP	AL RAKHA CONTRACTING AND GENERAL TRANSPORT LLC	1,236.00
2015	EMAL GATES ACCESS AND PARKING	EMIRATES ALUMINUM COMPANY (EMAL)	ALSUWEIDI	AMANA STEEL BUILDING CONTRACTING LLC	-
2015	AL HADEEL RESIDENTIAL BUILDING	ALDAR PROPERTIES PJSC	BROADWAY MALYAN	AL FARA'A GENERAL CONTRACTING	34,994.00 2,417.00
2015	SHK ZAYED GRAND MOSQUE VISITOR'S CENTER AND PLAZA	MINISTRY OF PRESIDENTIAL AFFAIRS - SHK ZAYED GRAND MOSQUE CENTER	ARCHITECTURAL CONSULTING GROUP	MASRI ENGINEERING	54,203.20
2015	OFFICES, SHOPS, WORKSHOP & STORES BUILDING GROUND +FIRST FLOOR Plot No. 38 & 39, Sector No, M9, Mussafah - Al Falah	HH SHAIK SAIF BIN MOHAMMAD AL NAHYAN	AL SUWEIDI ENGINEERING CONSULTANTS BUREAU	AL ESLAH GENERAL CONTRACTING	6,845.36
2015	RAWDHAT RESIDENTIAL BUILDING	EMIRATES LAND	STUDIO MARCO PIVA	BRIGHT ACCORD GENERAL CONTRACTING LLC	35,000.00
2015	Dar Al Shifa Hospital Basement+Ground+2Floor+Top Roof Plot no.P6, Khalifa City A Abu Dhabi	Ismail Fatah Abdulla Al Khajah	Al Shurooq Engineering Consultant	TERNA	31,000.00
2015	Residential Tower AT PLOT NO. C18, SECTOR W-1, ABU DHABI, UAE	LINK INTERNATIONAL PROPERTIES	EHAJ CONSULTING ENGINEERS	GHANTOOT	37,126.00
2016	BATEEN MARINA RESORT DEVELOPMENT PLOT C 103, SECTOR W35, ABU DHABI, UAE	H.E. SHEIKH MOHAMMED BIN KHALIFA BIN ZAYED AL NAHYAN	ACG	ALI AND SONS	15,743.00
2016	AL MEENA RESIDENTIAL AND COMMERCIAL TOWER	FOUNDATION PROPERTY MANAGEMENT	DEWAN ARCHITECTS + ENGINEERS	ARABIAN CONSTRUCTION CO.	97,858.53
2016	SAADIYAT ISLAND RESORT	SHEIKH SUROOR BIN MOH'D AL-NAHYAN	KHATIB & ALAMI	Ghantoot	2,307.29
2016	Al Reem Abu Dhabi	Wafra Real Estate Co.	KEO	Commodore Contracting Co. L.L.C.	58,505.00
2016	700 WORKSHOP MASJID WITH IT'S SUPPLEMENTS, Zone: Al Bahiya, Sector No. Al Bahya Old, Plot No: P4a Abu Dhabi	General Authority Of Islamic Affairs and Endowments	Al Suweidi Engineering Consultants Bureau	Rama Real Estate Investment & Development	662.00
2016	Al Reem Island, City of Lights - CHECKING AND ISSUANCE OF NOC	Tamouh Investments	P & T Architects and Engineers Ltd.	CSCEC (Middle East) LLC	-
2016	MAMSHA AL SAADIYAT, SAADIYAT ISLAND, ABU DHABI, UAE	TDIC	RTKL	SPS MAMSHA JV	219,464.00
2016	COMMERCIAL BUILDING, C55 RAWDHAT ABUDHABI	ALI & SONS CO. L.L.C.	AL AMARA AL SHARQIA	Ali & Sons Contracting Co. L.L.C.	20,290.00
2016	700 WORKSHOP MASJID WITH IT'S SUPPLEMENTS Zone: Al Shahama View, Sector No. Al Al Shahama New, Plot No: P163 Abu Dhabi	Mr. Saeed Bin Omier Youssef Al Muhairi	Al Suweidi Engineering Consultants Bureau	International Construction Contracting Company LLC	662.10

AWARDED JOBS IN ABU DHABI AND AL AIN, UNITED ARAB EMIRATES



YEAR	PROJECT NAME	CLIENT	CONSULTANT	MAIN CONTRACTOR	AREA (sq m)
2016	Park View Saadiyat	Bloom	MZ Architects	AL MANSOURI 3B LLC	42,317.00
2016	Saadiyat Beach Apartment - NORMAL PT SLABS	Nael & Bin Harmal Investment Co.	Shankland Cox LTD	Nael & Bin Harmal Hydroexport Est.,	81,046.00
2016	Saadiyat Beach Apartment - TRANSFER SLABS	Nael & Bin Harmal Investment Co.	Shankland Cox LTD	Nael & Bin Harmal Hydroexport Est.,	22,949.00
2016	Club House in Abu Dhabi		HEBERGER ENGG CONSULTING ENGRS	Abu Dhabi Financial Group	
2016	FIRST GULF BANK HEAD QUARTERS - CORES/OPENINGS REVIEW			EC Harris International Limited – Abu Dhabi	
2016	Mosque, Plot No: P2 , Sector E8 , Abudhabi	Moza Abdulla Bin Mohammed Saleh Al Suweidi	Al Suweidi Engineering Consultant Bureau L.L.C	Bin Moosa Contracting L.L.C	1,517.30

AWARDED JOBS IN INDIA



YEAR	PROJECT NAME	CLIENT	CONSULTANT	MAIN CONTRACTOR	AREA (sq m)
2012	Jogeshwari	Urmilaben Parikh	GALA consultants	Parikh Enterprise	3,462.00
2012	Walia's Project	Walia Realtors Pvt. Ltd.,	N. S. Lele and Associates	Walia Realtors Pvt. Ltd.,	4,056.00
2012	Proposed Hotel Building	-	Ascent Structural Consultant	Vedanta Cultural Foundation	344.00
2012	PROJECT ARIHANT AURA	ARIHANT PARADISE REALTY PVT. LTD.	A. G. GOKHALE & ASSOCIATES	ARIHANT PARADISE REALTY PVT. LTD.	8,800.00
2012	Jaipur	-	-		30,168.00
2013	DAV Public School at Secotr 48-49 Guragaon, India	-	NNC	Paragon Constructions (India) Private Limited	-
2013	PT beams at R-77A Greater Kailash Part-1 New Delhi	-	CREATIVE DESIGN CONSULTANTS & ENGINEERS PVT LTD	Titus and Co., Advocates	-
2013	Brigade Calladium	-	Mahimtura	-	260.00
2013	SDB 4, Infosys, Mangalore	-	TRC Engineering PVT Ltd.,	Infosys Limited	40,845.00
2013	Sanofi Tower	-	L&T EDRC	-	13,505.00

AWARDED JOBS IN NORTHERN EMIRATES, UNITED ARAB EMIRATES



YEAR	PROJECT NAME	CLIENT	CONSULTANT	MAIN CONTRACTOR	AREA (sq m)
2006	G+M+14 RESD'L. BLDG. ON PLOT 132	-	Bu Humaid Consultants	Civic Builders	-
2006	G+2P+HC+15 ON PLOT 780	-	Gulf Int'l Consultants	Al Rukn Building Contracting	-
2006	G+4P+20 ON PLOT 424	-	Al Emaar	Al Rukn Building Contracting	-
2006	G+M+7+ROOF ON PLOT NO. 26/9/Z	-	KWEC Consultants	Al Barook Bldg. & Contracting Co.	-
2006	B+G+4P+HC+27 TOWER	-	Gulf Int'l Consultants	Al Rukn Building Contracting	-
2006	G+4P+HC+29 Typ +HP on Plot 454, Al Majaz	-	-	Athena	-
2006	G+M+10 Res/Comm Bld on Plot 97at Al Naemiya	-	-	Civic Builders	-
2006	G+M+10 Res/Comm Bld on Plot 129 at Al Naemiya	-	-	Civic Builders	-
2006	G+6P+HC+41+2 Duplex+3roof+HP on Plot 1259, Al Khan	-	-	Sun Engineering	-
2006	Al Masa Tower (2B+G+5P+HC+32 floors)	-	-	Sharjah Towers General Contracting	-
2006	G+2P+10 on Plot 233, Al Numaiyah	-	-	Spark Building Contracting Co	-
2006	Al Hamra Palace Hotel (C014)	-	-	Al Hamra Construction	-
2006	Al Naeem Mall / Wharf Centre Mall - Ras Al Khaimah	-	-	KuK Middle East LLC	-
2006	G+3P+15 Building On Plot 119	-	-	Civic Builders	-
2006	G+3P+22+HC+Roof On plot no. 844, Al Khan,	-	-	Civic Builders	-
2006	G+3P+HC+15 typ Res. & Comm. Bldg on Plot No. 779 @ Al Khan	-	-	Al Qabdha Bldg. Cons.	-
2006	Emirates Bank International Bldg. in Sharjah	-	-	Gustav Pegel & Sohn	-
2006	4B+G+55, Al Mamzar Tower on Plot No. 97	-	-	Darwish Engg. Emirates	-
2007	G+6P+HC+37 BEACH TOP PLOT 1252	-	Horizon	Sun Engineering	41,265.00
2007	G+4P+1SP+30 FLOORS ON PLOT NO. 925	-	Oryx Consultants	Al Rukn Building Contracting	19,945.00
2007	G+4P+32+PH+HC+ HELIPAD AL RUMAILA	-	KWEC Consultants	MEC Construction	49,296.00
2007	G+M+2 Building for Mr. Salem Obaid salem Al Suwaidi Plot 5839/A Industrial Area 11-Sharjah	-	-	Al Jawal Contracting Co.	3,310.00
2007	SHARJAH INTERNATIONAL AIRPORT EXP. & REDEVEL	-	GHD	Saudi Binladin Group	11,631.00
2007	(G+3 Parking Levels+13 Typical) Building on Plot No. 60 (Z-1) @ Ajman, UAE	-	BUHUMAID ENG'G. CONSULTANTS	CIVIC BUILDERS	11,821.00
2007	B+G+7 TYP. ON PLOT NO. 436 PROPERTY, MOWAILEH, SHARJAH, UAE	-	Al Riwaq Engineering Consultancy	Golden Falcons Const. Co. LLC	5,956.00
2007	Abcco Tower	-	Dimensions Eng'g. Consultants	Ali Moosa & Sons	17,213.00
2007	G+4P+15 COMM./RES'D'L. BLDG. ON PLOT 539	-	Al Telal Projects Engineering	-	17,600.43
2007	(G+3P+15) Building for Mr. Hassan Nashat Al Kasas	-	AL MADAEN ENGINEERING	CIVIC BUILDERS	9,829.00

AWARDED JOBS IN NORTHERN EMIRATES, UNITED ARAB EMIRATES



YEAR	PROJECT NAME	CLIENT	CONSULTANT	MAIN CONTRACTOR	AREA (sq m)
2008	AL QASBA TUNNEL TOWER	-	Horizon	S. S. Lootah Contracting Co.	82,761.30
2008	(G+3P+11Typ.) on Plot No. 27/141 Al Nad, Sharjah	-	Al Ameen	Golden Falcons Const. Co. LLC	14,741.00
2008	G+7P+HC+35 Floors+Duplex Building (Beach Tower II) on Plot No. 1230	-	Horizon	S. S. Lootah Contracting Co.	67,554.00
2008	G+6 Bldg. on Plot no. 21, 22 at Ajman	-	-	CIVIC BUILDERS	2,872.00
2008	Danat Al Khan Tower	-	Al Bahar	Darwish Engineering	84,274.00
2008	G+5P+25 TYP.+P.H	-	Bu Humaid Consultants	Mahmoud Abu Jumaiza	56,812.91
2008	G+5P+HC+30 ON PLOT 1132, AL KHAN	-	Al Telal Projects Engineering	Danat Al Khaleej	48,660.00
2009	Salem Abdullah Salem Tower in Sharjah	-	KHATIB & ALAMI Consolidated Eng'g. Co.	Gustav Pegel & Sohn	36,107.73
2009	Sharjah Cement Factory Coal Storage at sajaa, Sharjah - UAE	-	-	e.Construct FZ LLC	-
2010	Murur Mixed Use Dev't	-	AJ CONSULTANTS	Ali Moosa & Sons Contracting	179,231.24
2012	Sharjah Trnsport Head Quarters Building on Plot # 1446/A at al Azrah, Sharjah	-	Al Rostamani & Associates / Alturath Engineering Consultants	S. S. Lootah Contracting Co.	12,702.51
2012	Novotel & Ibis Hotels and Novotel Serviced Apartments, Fujairah, UAE	-	Khatib & Alami Consolidated Engineering Co.	Fujairah National Group	22,638.60
2012	New World Private School, Sharjah, UAE	-	Access Engineering Consultant	Modern Executive Systems Contracting	3,924.59
2012	St. Anthony of Padua Roman Catholic Church, Sharjah, UAE	Catholic Church	Al Zein Design Engineering and Consultant	Development Trading & Contracting Company	5,408.00
2012	Al Rayyan Mall and Three Residential Towers on Plot No. 509, Al Nahda, Sharjah	-	Gambert Engineering Consultancy and Decoration	Terna SA Gek Group	60,420.20
2014	G+3P+9 COMMERCIAL/RESIDENTIAL BUILDING ON PLOT NO. 159, SHUHEEN, SHARJAH	FARDALLA MOH'D ABDELRAHMAN AL AWADI	ADWAR ENGINEERING CONSULTANT	ADWAR CONTRACTING	13,638.00

AWARDED JOBS IN QATAR



YEAR	PROJECT NAME	CLIENT	CONSULTANT	MAIN CONTRACTOR	AREA (sq m)
2004	New Mercedes Showroom	-	National Industrial Contracting	Nasser Bin Khalid	-
2006	LA CIGALE HOTEL	-	-	Qatari Arabian Construction Co.	-
2007	The Pearl - Qatar Parcels PA-04 & PA-05 Towers, Garages & Townhouse	-	-	Qatari Arabian Construction Co	-
2007	Dukhan Tower Project (B+G+20)	-	-	Shannon Engineering	-
2007	Umm Bab Tower	-	CICO	Commodore Qatar Contracting Co. (LLC)	48,013.00
2007	(2B+G+M+13) Residential Bldg. - Fareeq Abdul Aziz Qatar	-	-	REDCO Construction	57,195.00
2007	P-287 - The Pearl Qatar, Porto Arabia Parcel 1, Towers and Townhouses	-	KEO International	Construction Development Company L.L.C	60,401.22
2007	Porto Arabia - The Pearl Qatar - Towers A, C & D	-	KEO International	Afrina Trading & Construction Company	115,023.00
2008	Platinum Tower	-	-	Qatari Arabian Construction Co.	22,988.00
2008	P-296 Barjeel Residential Tower (Package 2)	-	Arab Engineering Bureau	Construction Development Company L.L.C	68,516.00
2008	Commercial and Residential Complex Al Attiyah Group	-	CICO Consulting Architects & Engineers	Satal Qatar Contracting	33,890.50
2008	Retaj Hotel Building	-	-	Badr El Hazek - Qatar WLL	13,445.51
2009	Yohan Tower, Doha Qatar	-	SYNA Design Consultant	Commodore Qatar Contracting Co. LLC	28,106.00
2009	Parcel 7B Podium and Tower Porto Arabia at the Pearl Qatar	-	-	REDCO Construction	55,358.00
2009	Construction of VB#11, The Pearl qatar, Viva Bahriya Development	-	-	REDCO Construction	24,222.00
2009	Construction of VB#17, The Pearl qatar, Viva Bahriya Development	-	-	REDCO Construction	24,436.00
2009	The Pearl Qatar VIVA Bahriya - VB 29 @ Doha Qatar	-	-	Qatari Arabian Construction Co.	39,515.00
2009	Parcel 12A Podium and Tower Porto Arabia at The Pearl Qatar	-	-	REDCO Construction	55,158.00
2009	Underground Parking	-	-	United Construction Est.	19,188.00
2009	(2B+G+35+R) @ Dafna, Qatar	-	-	REDCO	53,245.60
2011	Qatar Coast Guard Observation Project, Doha, Qatar	-	-	Densit Asia acific	
2012	Al Jassimya Tower	-	EGEC Qatar Engineering Consultation	Commodore Contracting Company	63,321.00
2012	The Pearl Viva Bahriya VB 09, Doha, Qatar	-	-	United Construction Establishment	26,634.00
2012	Proposed B+G+M+7, Doha, Qatar	Yasser Saeed Ali Al Ali	Atak Engineering Consultants	Badr El Hazek - Qatar WLL	6,386.00
2012	Al Mana Tower A	Mr. Mohammed Hamad Al Mana	Dara Engineering Consultants	United Construction Establishment	2,000.00
2012	Dubai Tower, Doha Qatar	-	RMJM	Al Habtoor & AlJaber Joint Venture	132,000.00
2012	Al Jaber Engineering Headquarters, Lusail, Qatar	Al Jaber Engg LLC	Costas	Al Jaber Engineering LLC	7,500.00
2012	3B+G+14 Salata Building	-	James Cubitt	Al Bandy Engineering, Trading and Contracting WLL	13,180.00

AWARDED JOBS IN QATAR



YEAR	PROJECT NAME	CLIENT	CONSULTANT	MAIN CONTRACTOR	AREA (sq m)
2012	MKH-Office Tower (B+LG+UG+4P+27F)	Shk Mohammad Khalid Al Thani	Se & M	Construction and reconstruction Engginering	38,326.00
2012	Al Mana Villa North BVN-035	Mohammed Hamad Al Mana	-	United Construction Establishment	1,131.00
2012	Bahri Villa North BVN-08	Mr. Ali Sawan	Mimar design	United Construction Establishment	1,380.00
2012	Qatar Petrol Station	Mr. Mohamed Hamad Abdella Al Mana	MZ & Partners Architectural and Engineering Consultancy	United Construction Establishment	1,157.00
2013	Union Residential Tower	Hamad Khalifa Abdallah Al Abdalla Al Attia	MZ & Partners	UrbaCon Trading & Contracting	36,382.50
2013	Construction of New College of Engineering Building - Qatar University	New Doha University	Al Darwish Engineering wll	MIMAR/ Sketch	43,650.30
2014	Almana Residential Building B+G+7+Roof	Mr. Mohamad Hamad Abdallah Almana	Erga Group	K&H Sons of M.ALMANA Co.	7,380.00
2014	DOHA FESTIVAL CITY	BAWABAT AL-SHAMAL REAL ESTATE CO., WLL	ARAB ENGINEERING BUREAU and WSP GROUP	ALEC BUILDING EXCELLENCE	76,075.80
2014	LUSAIL RESIDENTIAL APARTMENTS	MOHAMED SAEED AL KHAYRIEN	DIMENSIONS ENGINEERING CONSULTANT	PAT ENGINEERING ENTERPRISES CO. WLL	29,203.00
2014	PREMIER INN HOTEL AT EDUCATION CITY, DOHA, QATAR	Premier Inn Hotels Qatar LLC	Dewan	Al Ali Engineering	9,234.00
2014	G+3+P FLATS IN AL WAKRA, QATAR	MOHAMED HAMAD ABDELLA AL-MANA	AL MAJD CONSULTING ENGINEERS	K&H SONS OF M. AL MANA CO.,	1,227.00
2015	B+G+M+1 SHOWROOMS AND OFFICES BUILDING	MOHAMED HAMAD ABDELLA AL-MANA	AL MAJD CONSULTING ENGINEERING	K&H SONS	7,596.00
2015	B+G+2 OFFICE BUILDING AND G+1+ROOF ATTACHED VILLAS	HASSAN SHOKRI H. AL-MAHSIN	ARABIAN ARCHITECTURE GROUP	AL BANDARY ATLASCAT	8,599.00
2015	Mall of Qatar -New Lifestyle Shopping	URBACON CO.	KEO	AL KHAYYAT	-
2015	Construction of Marina Tower Res 11 (2B+G+1P+20Floors)	AL Manaa	ERGA Progress	CONTRACT AL MANA	15,106.00
2015	2B+G+6P+18 COM'L. TOWER Marina Commercial Plot No. 039	International Design & Consultant Corporation	National Engineering Bureau	UrbaCon Trading & Contracting, LLC	35,155.00
2015	MEREIKH-COMPOUND (180VILLAS+CLUBHOUSE)	SOLIMAN-BROS-CO.	DRA	UrbaCon Trading & Contracting, LLC	32,313.00
2015	RESIDENTIAL BUILDING (2B+G+2) AND CLUB HOUSE (2B+G+1) AI DUHAIL, QATAR	QATAR ISLAMIC INTERNATIONAL BANK	GCE	Athar Building & Development	48,652.48
2015	Doha Mixed Used development Musheirib Doha (OASIS)	HALUL REAL ESTATE INVEESTMENT COMPANY	AECOM / MZP	REDCO Construction - ALMANAA	176,000.00
2016	MULTI STOREY CARPARKING for QATAR UNIVERSITY (B+G+3+R FLOOR)	QATAR UNIVERSITY	AEB	Tadmur Contracting	69,703.00
2016	VIVA BAHRIYA - 24, THE PEARL QATAR	MOHD HAMAD A AL MANA	MZP	United Construction Establishment	28,857.00
2016	Construction of HGH Trauma and Emergency Expansion	Public Works Authority Building Affairs		MIDMAC Contracting Co. WLL	-
2016	WAJBAH PALACE PHASE 1 , QATAR	MR HILAL JEHAM AL-KUWARI	ECG	MIDMAC	1,034.00
2016	PROPOSED 2B+G+7+TECHNICAL RESIDENTIAL DEVELOPMENT (5 BLDGS) ON PLOT NO. 23150001 BIN MAHMOUD, DOHA, QATAR	Gulf Trading & Contracting Co	LACASA	REDCO ALMANA	65,539.00

AWARDED JOBS IN KINGDOM OF SAUDI ARABIA



YEAR	PROJECT NAME	CLIENT	CONSULTANT	MAIN CONTRACTOR	AREA (sq m)
2006	RED SEA MALL, SAUDI ARABIA	-	SAUDI DIYAR CONSULTANTS	ALMABANI / AL SAAD GEN. CONTRACTING	-
2009	Al Turki Plaza Office Tower, Al Khobar, Kingdom of Saudi Arabi	-	Samir Khairallah & Partners	Al Saad General Contracting	14,057.00
2009	Ayhar Villa, Saudi Arabia	-	Socotec	Saudi Oger LTD.	-
2010	Business Gate, Riyadh Saudi Arabia	-	Saudi Architects	BAS Contractors	10,078.00
2010	King Abdullah Financial District, Package D, Parcel 5.07 & 5.08, Riyadh, Saudi Arabia	-	Zuhair Fayez Partnership	Saudi Constructioneers Est.	142,318.00
2010	Faculty of College in Business Administration, Riyadh, KSA	-	Al Naeem Consultants	Al Serb	25,499.00
2011	Ester Project in Almalek Rd., Jeddah, KSA	-	Monther , Sawan consultant Architect	Ruwad Civil Construction (R.C.C)	11,744.51
2011	Hotel Convention Center	-	Oger Interanational	Saudi Oger Ltd.	-
2012	HFR Al Baten Residential Building (53 Blocks) at Kingdom of Saudi Arabia	-	-	Saudian Al - Tarres Company	83,965.00
2012	Gosi Olaya Towers, Saudi Arabia	-	Zuhir Fayz Consultant	Nesma and Partners	209,587.89
2012	Samba Head Quarters, KAFD, KSA	-	Buro Happold	El Seif Engineering Contracting	63,336.96
2012	SAUDI PRESS AGENCY, RIYADH, KSA	Ministry of Culture and Information	Al Zaid Engineering Consultants	Saudi Lebanese Tarouk Contracting	10,811.02
2012	Burj Rafal Project on Plot No.: 212/1 Riyadh, KSA	-	e.Construct	Dubai Saudi Arabian Contracting Company	71,731.93
2012	KACKC (ITHRA), KSA	-	Buro Happold	Saudi Oger Ltd.	47,032.64
2012	Jabal Omar Development Project - Makkah, KSA	Jabal Omar Dev	-	Nesma and Partners	200,000.00
2012	King Faisal Hospital and Research Center - King Abdullah Center for Cancer and Liver Diseases - Riyadh, KSA	King Faisal Hospital and Research Center	Mustang Al Hejailan	Al Bawani Co.	113,657.85
2012	King Abdullah Waqf in Al Madin Al Munaw	GULF HOLDING COMPANY	Omrnia	Saudi Oger LTD.	160,000.00
2012	MOE - Building 10 & 9A	MOE	-	Saudi Oger Ltd.	6,264.01
2012	INFORMATION TECHNOLOGY CENTER	King Fahd University of Petroleum and Minerals	Salama Sructural Engineers	BEIJING CONSTRUCTION ENGG GROUP CO. LTD	-
2012	IZIDIHAR RESIDENTIAL COMPOUND, KSA	Olaya Real Estate	Arabian Consulting Engineers	Bonat Al Hader Investment Trade Tourism & Construction	#REF!
2012	King Abdullah Financial District (KAFD) / CAR PARKS PARCEL 3.11	RAYADAH INVESTMENT COMPANY	Burro Happold	El Seif	#REF!
2012	BATTOYOR PARKING PROJECT	Heba Fire and Safety Equipment Company Ltd	-	ASMAEL GENERAL CONTRACTING EST.	#REF!
2012	Supply and Installation KAFD Parcel 4.10 and 4.11	-	Dar Al Handasah	Shapoorji Pallonji	-
2012	One Storey Villa	RAYADAH INVESTMENT COMPANY	-	Global Consortium Constrution	368.00
2012	Hilton Riyadh Hotel and Residence Project	-	-	Al Latifia Trading and Contracting	-
2012	Al Ta'aziz Tower	TA'AZEEZ REAL ESTATE DEVELOPMENT Co.	Samir Khairallah & Partners	Project Build Co Ltd.	27,118.21
2013	MAJDOUL TOWER	Al Dafa Company	Consolidated Consultants	United Engineering Construction Co.	56,761.00
2013	HAIL MALL	Univeristy Educational Society	Dar Al Amara	El Seif Engineering Contracting Co.	50,015.00
2013	ARAB SAT - HQ	Arab Satellite Communication Organization (Arabsat)	Dar Al Omran	Al Bawani	17,533.00

AWARDED JOBS IN KINGDOM OF SAUDI ARABIA



YEAR	PROJECT NAME	CLIENT	CONSULTANT	MAIN CONTRACTOR	AREA (sq m)
2013	Mulhim Tower	MR. GHASSAN AL MULHIM	NASSIR AL MULHIM	Ibrahim Asmael General Contracting Company	8,320.00
2013	PROPOSED TWIN TOWERS RESIDENTIAL TOWERS - DESIGN FEES	DAMAC PROPERTIES CO., LLC	DAR AL RIYADH ENGINEERING AND ARCHITECTURE	DAMAC	-
2013	AL SALAM HOSPITAL	NASSER FUNISAN ALSEHANI	HSD	AMEL ADVANCE CORPORATION.	9,246.08
2013	Dar Al Youm Tower	Dar Al Yaum	Bina Engineering Consultant	Al Yamama	21,625.00
2013	Governmental Complex	MINISTRY OF FINANCE	AL ETQUAN OFFICE	AL FOUZAN TRADING AND GENERAL CONTRACTING CO.,	110,000.00
2013	Al Rajhi Bank HQ	AL RAJHI BANK	RSP	Contracting and Construction Ent. Co., Ltd., - Samsung JV	41,689.00
2013	Dedicated Carparks Parcel 1.03, KAFD, Riyadh, KSA	Rayadah Investment Company	Buro Happold	El Seif Engineering Contracting Co.	43,650.00
2013	Dedicated Carparks Parcel 2.15, KAFD, Riyadh, KSA	Rayadah Investment Company	Buro Happold	El Seif Engineering Contracting Co.	26,845.00
2013	Al Fardan Tower Project	Al Fardan jewelery co.	ERGA	Saudi Lebanese	9,678.00
2013	Rafal Residence at Plot No. 21/2335, Riyadh, KSA	RAFAL Development	ERGA Consultant	Dubai Saudi Arabian Contracting Company	65,000.00
2013	Car Park in Riyadh	INMAIA	BADAEI	United Standards Co.,	18,000.00
2013	GARDEN MALL	-	Badael Consult	Advanced Elements for contracting	3,610.00
2013	JARIR RESIDENTIAL BUILDING RIYADH, KSA	JARIR REAL STATE	KITE ARABIA LTD.	UNITED STANDARDS CO.	20,000.00
2013	FACULTY OF MEDICINE- AL-JOUF UNIVERSITY AL JOUF, KINGDOM OF SAUDI ARABIA	AL-JOUF UNIVERSITY	TYPSA	SAFARI CONTRACTING CO.	38,000.00
2014	Centro Rotana	Arabian Contracting Services	EHAJ	RAM CONTRACTING COMPANY	7,854.21
2014	Al Malga Project	URJ Development	RAFIK EL KHOURY	RAM CONTRACTING COMPANY	-
2014	Marvella Project – Mixed Used	Rafal	NAGA Consultant	Saeed Habash	35,770.20
2014	Hospital Expansion - Car Park	-	Mustang Al-Hejailan	Al Bawani General Contracting	8,004.00
2014	Marvella Project – Flat Apartment and Duplex	NAGA	Rafal	Allied Arab Contracting Co.	57,375.00
2014	Marvella Project – Flat Apartment and Duplex	NAGA	Rafal	Al Saleem Corp	57,375.00
2014	TABOUK UNIVERSITY	MOE	-	KHUDAIR FOR TRADE. & CONT. CO	4,588.12
2014	AKH COMMERCIAL TOWER	AL ABDULKARIM HOLDING CO.,	DEWAN	SHAPPORJI PALLONJI MIDEAST LLC – KSA BRANCH	40,275.00
2014	KING ABDUL AZIZ CITY OF SCIENCE AND TECHNOLOGY, RIYADH, KSA	-	LAVA NATION	ABC ROCK GROUP	32,346.30
2015	AL-SHEIKH FAYEZ PALACE	AL SHEIKH FAYEZ	-	AL FOUAD GROUP COMPANY	5,204.42
2015	MOHAMMED BAKR BEACH HOUSE	MR. MOHAMMED BAKR	KHALID AL AMOUDI	DAAC COMPANY	2,286.00
2015	COMPOUND SCHOOL FOR GIRLS	GHERAS AL AKHLAK SCHOOL	NEAP	AL DARAT CONTRACTING COMPANY	5,691.14
2015	COMPOUND SCHOOL FOR GIRLS	GHERAS AL AKHLAK SCHOOL	NEAP	AL DARAT CONTRACTING COMPANY	-
2015	Strategic Missile Base Units	MOD	Zuhair FayeZ Partnership	CERCON	26,442.30
2015	RAFAL LIVING TOWER	RAFAL REAL ESTATE	SERHAL CONSULTING OFFICE	AL SAUDI ARABIAN CONTRACTING COMPANY	102,857.20

AWARDED JOBS IN KINGDOM OF SAUDI ARABIA



YEAR	PROJECT NAME	CLIENT	CONSULTANT	MAIN CONTRACTOR	AREA (sq m)
2015	R DEV'T OF MOI SECURITY FACILITIES FOR	MINISTRY OF INTERIOR (MOI) - KSA	NKY ARCHITECTS AND ENGINEERS	EL SEIF ENGINEERING CONTRACTING CO.	75,928.50
2015	Olaya towers 2 and 3	MAAR REAL ESTATE AND DEVELOPMENT C	ABDULLA AL SHUHAIMI	AR REAL ESTATE INVESTMENT AND DEVEL	66,859.20
2015	MIXED USED DEVELOPMENT		MR. SALEH AL REMAIZAN	RSR ARCHITECTURAL CONSULTANT	39,177.00
2015	Abdulaziz Al-Omran Residence	Mr.Aziz Al Omran	Afkar Architects.	Architectural Elite EST.	2,300.00
2016	STRATEGIC MISSILE BASE UNITS	ministry of defense	Zuhair Fayeze Partnership Consultants.	Al Fahed	-
2016	AL KHORAYEF CENTRE - AL KHOBAR, KSA	AL KHORAYEF	MEINHARDT	SHAPOORJI PALLONJI MIDEAST LLC	24,910.01
2016	Souq Al Khozama - AL Aziziyah AL Khobar	Abdallah Abwayan	مكتب التوكيلات الاستشارية للاستشارات الهندسية	AFYAA AL BEENA EST.	7,495.00
2016	Canary community residential complex	Rashed AlRashed & Sons Group	EDAS consultant	Al Rashed Comatec	23,326.00
2016	STRATEGIC MISSILE BASE UNITS	ministry of defense	Zuhair Fayeze Partnership Consultants.	Al Fahed	-
2016	Canary community residential complex	Rashed AlRashed & Sons Group	EDAS consultant	Al Rashed Comatec	23,326.00
2016	Marriot Hotel Riyadh	Arriyadh Development Authority	Perkins + Will	Shapoorji Pallonji Mideast	23,118.00
2016	DHAHRAN MALL	ABDULLAH DHOWAYAN	COLLAGE CONSULTANTS WLL	AFYAA AL BENAA EST	18,900.00
2016	Al Rashid Residential Compound	AL Rashid	Archi Center	Al Rashid Comatec	10,651.00

4.0

APPROVALS

PROJECT : SB-21 Saadiyat Beach Apartment Abu-Dhabi

MATERIAL SUBMITTAL : Prequalification Documents

TRANSMITTAL NO : **NBHH-SB-21-PRE-0006**

REV : _____

Date: **08/10/2016**

PROJECT MANAGEMENT TDIC	CONSULTANT	CONTRACTOR
		 <small>Hael & Bin Harmal Hydroexport Est. Construction, Engineering and Management Solutions</small>

WE ARE SENDING HEREWITH / UNDER SEPARATE COVER, THE DRAWINGS / DOCUMENTS/ SAMPLES LISTED BELOW.

ITEM NO.	DRW., SPEC. OR BOQ. REF	GENERAL DESCRIPTION AND REVISION DETAILS	TYPE +	COPIES	ACTION CODE *
1		Prequalification Documents Post Tensioning Works (M/S. Freyssinet PT Slab System)		3	

We certify that the items submitted herewith have been reviewed in detail and are in strict conformance with the Contract Drawings and Specifications except as otherwise stated.

CONTRACTOR : _____

DATE: _____

M/S Blochholb



RECEIVED BY CONSULTANT:
DATE: **08 OCT 2016**



CONSULTANT COMMENTS

"B"
M/S Freyssinet for PT Slabs system are ok subject to Client, SCL, ADM and Specs (to submit Design, shop drawings and calculation) material

Corrections or comments made relative to submittals during this review does not relieve the contractor from compliance with the requirements of the drawings and specifications. This check is only for review of general conformance with the design concept of the project and general compliance with the information given in the contract documents. The contractor is responsible for confirming and correlating all quantities and dimensions, selecting fabrication process and techniques of construction; coordinating his work with that of other trades, and performing his work in a safe and satisfactory manner.

CONSULTANT RESIDENT ENGR/ PROJECT MANAGER
DATE: _____

CONSULTANT ENGR
DATE: _____

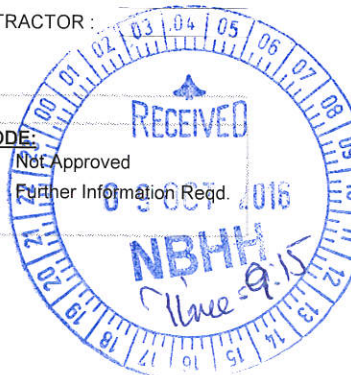
PROJECT MANAGER/ CLIENT COMMENTS:

CONSULTANT RESIDENT ENGR/ PROJECT MANAGER
DATE: _____

RECEIVED BY CONTRACTOR:
DATE: _____

<p>+ TYPE:</p> <p>SD: Shop Drawings MD: Manufacturer's Data CT: Certificates</p>	<p>SM: Sample GT: Guarantee OT: Others</p>	<p>* ACTION CODE:</p> <p>A: Approved B: Approved as Noted C: Not Approved D: Further Information Req'd.</p>
---	--	---

RECEIVED
08 OCT 2016
NBHH
Time 9:15



For the attention of: Maher Sarraj - Project Director
AGCCIC
PO Box 1741
Dubai, United Arab Emirates

Our ref: AS/JG/tt/ L117502334
26 September 2016

Project: Opera Grand at Plot 63A - 3456900-8 Downtown Dubai, UAE

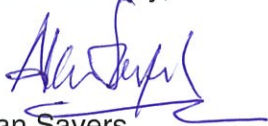
Subject: Request for Subcontractor Approval

ARCADIS INTERNATIONAL
LTD - DUBAI BRANCH
801 & 901, Floors 8 & 9,
Building 53
Dubai Healthcare City
P.O. Box 52750
Dubai
United Arab Emirates
Tel + 971 (0)4 319 3333
Fax + 971 (0)4 324 2531
arcadis.com

Dear Sir,

With reference to your letter dated 14 September 2016 (Ref. No. DU1529/DU//L20415/16), please be informed that Arcadis has no objection with K&A considering Freyssinet Gulf LLC for award.

Yours faithfully,



Alan Sayers
Project Director

Email: alan.sayers@arcadis.com

cc: Rob Watson - EMAAR
Luai Khader - Khatib & Alami
Stuart Anderson - AECOM
Neil Lineham - ARCADIS
James Marsh - ARCADIS



22nd Floor, I Rise Tower
Tecom, Dubai - UAE
Tel: 971 4 4252222
Fax: 971 4 4252233
P.O. Box: 5091

Luai Khader
Project Manager
Dubai
Luai.Khader@khatibalami.com

DU1529/DU/L/20415/16

September 14, 2016

*Luai Khader
ARCADIS
14 Sept 2016*

M/s ARCADIS Design & Consultancy
P. O. Box 93540
Abu Dhabi, United Arab Emirates
Tel: +971 2 417 0300

Attn : Mr. Alan Sayers- Project Director
Project : Opera Grand at Plot 3456900-8 Downtown - Dubai, U.A.E.
Subject : Request for Sub-Contractor Approval

Dear Sir,

With reference to the above subject and Contractor's submittal ref. OGTP-AGCCIC-SSA-0009 date 08th September 2016 (attached), please note that M/s Freyssinet Gulf LLC is in K&A approved list for post tensioned concrete. Accordingly, we request your approval or comments of their Prequalification's documents particularly for this project.

The above is for your immediate and necessary action.

Yours Faithfully,

For Khatib & Alami
(Consolidated Engineering Company)

Luai Khader
Project Manager

Encl: As Stated
CC. Mr. Rob Watson - EMAAR

SUBMITTAL TRANSMITTAL SHEET # 0057

PROJECT NAME	Artesia at "Akoya by DAMAC" on Plot No. 676-5408 at Al-Hebiah Third, Dubailand (Mudon), Dubai.	Project No.:	P.021.05- Artesia E006
		Date.:	15/Sep/15

Submittal No.:	CSCEC/PQ/CIV/S/013	Revision.:	00
Submittal Title.:	PRE QUALIFICATION DOCUMENTS (Post Tension Slab)		

ITEM NO	DWGS. SPECS BOQ REF	DESCRIPTION	TYPE	COPIES	REMARKS
1	Division 3; section 03450	Post Tension System (slab) Sub contractor pre-qualification	OT	3	
2		soft copy	OT	2	

TYPE: SD=Shop Drawing, SM=Sample, GT=Guarantee, MD=Manufacturer's Data, CT=Certificates, TT=Test Results, OT=Other

Supplier / Manufacturer.:	Freyssinet Middle East LLC		
We certify that the documents / Material submitted herewith have been reviewed in detail and are in strict conformance with the contract drawings and specifications except as otherwise stated			
Contractor (Name): Chen Zhonghua Chief Representative	Signature: <i>M. Fariz</i> Date: 15/09/2015	Received By:	Date: 15 SEP 2015 10:30 AM

<p>Resident Engineer Review Comments</p> <p>APPROVED AS NOTED. Refer Comments as per attached Annexure</p>	Consultant Decision
	<input type="checkbox"/> A' Approved
	<input checked="" type="checkbox"/> B' Approved As Noted
	<input type="checkbox"/> C' Not Approved
	<input type="checkbox"/> D' Not Required

Resident Engineer's (Name): Jayesh Vachhrajani	Signature: <i>J. Vachhrajani</i> Date: 15/09/2015	Received By Contractor:	Date:
--	--	--------------------------------	--------------

Correction or comments made relative to submittal during this review do not relieve the contractor from compliance with the requirements of the contract. This check is only for review of general conformance with the design concept of the project and general compliance with the information given in the contract documents. The contractor is responsible for confirming and correlating all quantities and dimensions, selecting fabrication processes and techniques of construction. Coordinating his work with that of other trades and performing his work in a safe and satisfactory manner.

Copy to:

Employer Consultant QS Other

Office

Sheet No.1 of 1

<input type="checkbox"/> URGENT	التجمع الهندسي ENGINEERING CONSORTIUM TEL: 04 - 2830770 FAX: 04 - 2830771	MAIL	ROUTING SLIP
<input type="checkbox"/> IMPORTANT			
<input type="checkbox"/> REVIEW			
TO	MG		
ACTION BY			
INFO			
COPY			
INITIAL			
DATE			
ACTION REF :			
REMARKS :			



SUBMITTAL OF SHOP DRAWINGS, EQUIPMENTS DATA, MATERIAL SAMPLE, OR MANUFACTURER'S CERTIFICATE OF COMPLIANCE FOR APPROVAL

I, REQUEST FOR APPROVAL OF THE FOLLOWING ITEMS

TO, MOD, CONSTRUCTION & MAINTENANCE DIRECTORATE PROJECT DIVISION

FROM: CERCON

SPECIFICATION SECTION NUMBER

DATE: 11/JUL/2015

CONTRACT NO.

RE-FILE NO.

ADH-CIV-36

PREVIOUS SUBM. NO.

CLIENT

PROJECT TITLE: THE ADMINISTRATIVE, SERVICE AND RESIDENTIAL BUILDINGS IN STRATEGIC MISSILE UNITS

ADDITIONAL COPIES TO :

ITEM NO.	DESCRIPTION OF ITEM SUBMITTED (TYPE, SIZE, MODEL, NUMBER ETC.)	CATALOGUE, CURVE, DRAWING OR BROCHURE	NO. OF COPIES	SPECIFICATION NO.	DRAWING SHEET PLATE OR FILE NO.	FOR ENGINEER USE ONLY: ACTION CODE
1	MATERIAL SUBMITTAL FOR ANCHORAGE (FPC)	CATALOGUE	1		FMSA/B/2164-MAT 001	(B)
2	MATERIAL SUBMITTAL FOR DUCTS (ICS)	CATALOGUE	1		FMSA/B/2164-MAT 002	(B)
3	MATERIAL SUBMITTAL FOR STRANDS (MAADANIYAH)	CATALOGUE	1		FMSA/B/2164-MAT 003	(B)
4	MATERIAL SUBMITTAL FOR STRANDS (MAKLADA)	CATALOGUE	1		FMSA/B/2164-MAT 004	(B)
5	MATERIAL SUBMITTAL FOR STRANDS (AL RASHED)	CATALOGUE	1		FMSA/B/2164-MAT 005	(B)
6	METHOD STATEMENT	DOCUMENT	1		FMSA/B/2164-MS001	(B)
7	INSPECTION CHECK LIST	DOCUMENT	1		FMSA/B/2164-ICL001	(B)
8	INSPECTION AND TEST PLAN	DOCUMENT	1		FMSA/B/2164-ITP001	(B)
9	PREQUALIFICATION DOCUMENT	DOCUMENT	1		FMSA/B/2164-PQ001	(B)
10	PROJECT QUALITY HEALTH SAFETY & ENVIRONMENTAL PLAN	DOCUMENT	1			(B)
11	IMPACT/ASPECT ASSESSMENT FORM	DOCUMENT	1			(B)
12	RISK ASSESSMENT FORM	DOCUMENT	1			(B)

CONSULTANT

NAME AND SIGNATURE OF CONTRACTOR :

(THIS SECTION WILL BE USED BY APPROVING AUTHORITY ONLY)

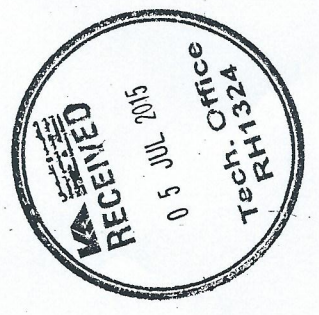
ENCLOSURE RETURNED (List by Item no.)

ACTION CODE: THE FOLLOWING ACTION CODES ARE GIVEN TO ITEM SUBMITTED (A code Letter will be issued for each item in column for section (above))

- A- APPROVED AS SUBMITTED
- B- APPROVED EXCEPT AS NOTED ON DRAWINGS . RESUBMISSION NOT REQUIRED
- C- APPROVED EXCEPT AS NOTED ON DRAWINGS, RESUBMISSION REQUIRED
- D- DISAPPROVED

CONTRACTOR

See Comments on the Attached Report



2B + G + M AGORA MALL ON PLOT NO.332-436 JUMEIRAH FIRST, DUBAI, UAE

DOCUMENT SUBMITTAL

DOCUMENT CODE	PROJECT #	REFERENCE NUMBER			REV.	DATE	AUTHOR
		DOCUMENT TYPE	DISCIPLINE	RUNNING NO.			
	GB-066	DOCS. SUB.	CIVIL	024	0	03.09.2016	RAM

ISSUED BY: GHANTOOT GULF GENERAL CONTRACTING TO: VE EXPERTS

DOCUMENT DESIGNATION:

No.	Description / Title	Document No. / Revision	No. of copies
1	PRE-QUALIFICATION DOCUMENTS FOR POST-TENSIONING WORKS. M/S FREYSSINET GULF LLC.	REV. 0	1 Hard Copy +CD

CONTRACTOR'S SIGNATURE:

RECIPIENT'S SIGNATURE:

The Engineer's Comments:

full 1
* Contractor to ensure P9 Contractor does request
* Life Safety shall be ensured.
* PT Contractor to do the Testing with respect to the compressive strength as per the Specifications.

- Approved
- Approved As Noted
- Revise & Resubmit
- Rejected

Engineer Representative:

SIGNATURE:

DATE:

The Project Manager

- Approved
- Approved As Noted
- Revise & Resubmit
- Rejected

Project Manager Representative

SIGNATURE:

DATE:

RECEIVED
04 SEP 2016
VE EXPERTS

Ref: GTGCE/A-070/PM/SC-FME/0026/2013

Date: July 23, 2013

To: M/s. Freyssinet Middle East LLC
P.O. Box 28752, Abu Dhabi, United Arab Emirates
Tel. No. 02 6422962 Fax No. 02-6422964
E-mail: fme@freyssinetme.ae

Attention:

Project: Al Jazeera Tower Commercial Building Construction
Plot No.C12, Sector (W-1), Abu Dhabi.

Subject: Sub-contractor Pre-qualification Submittal.

With reference to the above mentioned subject, please find attached herewith the sub-contractor submittal as detailed below:-

Sl. No.	Submittal No. / Description	Revision	Comments
1.	SC-010 (Pre-qualification for post tensioning works)	0	Approved as Noted

You are requested to comply with the Consultant comments and submit design, shop drawings & method statement for Consultant approval as commented in the attached letter.

This is for your information and necessary action.

For & on behalf of
GHANTOOT Transport & General Cont. Est. (Bldg. Division).

Engr. Mohammed El Fadel
QA/QC Manager



Encl: As stated above



Ref. No. : Su/GTGC/MAJ/rz/1014/204
Date : 22 July 2013

Ghantoot Transport & General Contracting Establishment
P.O. Box 110652
Tel : 02-6414151
Fax: 02-6412010

Attention : Mr. Yacout Said El Tantawy
Projects Director

Project : Construction, Completion and Maintenance Works for :
AL JAZEERA TOWER

Location : Plot No. C-12 – Sector No. W-1, Abu Dhabi, U.A.E.

Subject : Sub-Contractor (Post Tension Works)

Dear Sir,

With reference to your letter Ref. No. GTGCE/A-070/PM/0124/2013 dated 17/07/2013 regarding the above subject.

Having reviewed your submittal for the Sub-contractor of (Excavation Works), we would like to inform you that your proposal of (M/s FREYSSINET MIDDLE EAST L.L.C.) as sub-contractor for carrying out the Post Tension Works is approved provided that:

1. The work and tests shall be carried out according to contract, specification and drawings.
2. Local authority approval to be obtained for the Design and Drawings prior to starting the work.
3. Design, shop drawings, method statement and materials shall be submitted for approval, works shall not commence until all approvals are obtained.
4. Safety, environment and health precautions to be taken during carrying out the work.
5. Implementing Quality assurance and quality control plan to ensure that quality of works comply with contract specification.
6. M/s Ghantoot as main contractor shall be responsible for all acts and omission of the proposed sub contractor.

This is for your information and necessary action

Sincerely,

Eng. Makine Ajan Al Hadid
Project Manager



1/1

Date: 25.06.2013

REF: MTB/TCA/FREYSSINET/000005

FREYSSINET MIDDLE EAST – LLC

P.O. Box 28752
ABU DHABI,
United Arab Emirates
Tel: +971 (0) 2-6422962
Fax: +971 (0) 2-642296



Attention: MR.KHALIL DOGHRI – GENERAL MANAGER

Project: Abu Dhabi International Airport – Midfield Terminal Building
Subject: Prequalification Approval from Engineer

Reference: AECOM Letter dated 08.04.2013 with ref: MTC-CMA-TCA-0401-LTR-00383

Dear Sir,

In regards with the prequalification procedure being followed for approval of the subcontractors to be appointed, the approval letter referred above has been received from the Engineer.

Kindly consider this approval as a prerequisite for the Letter of Award Agreement to be signed.

Yours truly,


Ali Haydar ÖZAK
Project Director


Paul Jewkes
Sr. Commercial Manager

ACU


Encls: AECOM Letter dated 08.04.2013 with ref: MTC-CMA-TCA-0401-LTR-00383 (3 Pages)

Transmittal Advice No. MTC-CMA-TCA-0401-TML-00338



Project name	Midfield Terminal Complex Program		
Project number	AUH.06.10.0401		
To	Ali Haydar Ozak TCA JV		
Issued by	Alan Stevens AECOM	Date	25 April 2013
Subject	Approval for Subcontract Award – FREYSSINET GULF		
Comment	Please find attached Approval for Subcontractor Award for Post Tension Works.		

Media and Status Details

Print Size	Digital	Media	Purpose	Phase	
<input type="checkbox"/> A0	<input type="checkbox"/> B0	<input type="checkbox"/> PDF	<input checked="" type="checkbox"/> Print	<input type="checkbox"/> Preliminary	<input type="checkbox"/> Concept
<input type="checkbox"/> A1	<input type="checkbox"/> B1	<input type="checkbox"/> DWG	<input type="checkbox"/> Film/Tracing	<input type="checkbox"/> Information	<input type="checkbox"/> Preliminary
<input type="checkbox"/> A2	<input type="checkbox"/> B2	<input type="checkbox"/> DGN	<input type="checkbox"/> CD/Disk	<input checked="" type="checkbox"/> Action	<input type="checkbox"/> Design
<input type="checkbox"/> A3	<input type="checkbox"/> B3	<input type="checkbox"/> PDF+DWG	<input checked="" type="checkbox"/> By Hand	<input type="checkbox"/> As Requested	<input type="checkbox"/> Tender
<input checked="" type="checkbox"/> A4	<input type="checkbox"/> B4	<input type="checkbox"/> PDF+DGN	<input type="checkbox"/> Email	<input type="checkbox"/> Approval	<input checked="" type="checkbox"/> Construction
<input type="checkbox"/> Other	<input type="checkbox"/> Other	<input type="checkbox"/> Other	<input type="checkbox"/> LAN/WAN	<input type="checkbox"/> For construction	<input type="checkbox"/> As built

Distribution Details

Organisation	Address	Received	Attention of	Copies
TCA JV			Ali Haydar Ozak	1
ADAC			Suleiman Al Siksek	1

Document Details

Document number	Rev	Document Title
MTC-CMA-0401- CA-ASA-00013		Approval for Subcontract Award – Post Tension Works - FREYSSINET GULF

TCA JV
 P.O Box 63312
 Abu Dhabi
 United Arab Emirates

APPROVAL FOR SUBCONTRACTOR AWARD

Contract No: AUH.06.10.0401	Reference: MTC-CMA-0401-CA-ASA-00013
------------------------------------	---

Activity/Works Package:-

Post Tension Works	-	Approx. Value AED 5.5 Million
---------------------------	---	--------------------------------------

WBS:-

AUH.01.04.02.06.189

Name and Address of Subcontractor:-

**FREYSSINET GULF
 PO BOX 36211
 DUBAI
 UNITED ARAB EMIRATES**

Submitted Documentation:-

Prequalification Received: 13 March 2013	Review Date: 24 March 2013
---	-----------------------------------

ENGINEER – AECOM MIDDLE EAST LIMITED

The Engineer has reviewed the prequalification documents submitted and confirm the following in respect of the above named subcontractor being awarded the works package:

- a) Pursuant to Sub-Clause 12.9.2 and in respect of Sub-Clause 11.2.3 of the Conditions of Contract the Engineer hereby approves the named subcontractor being awarded the above works package
- b) Pursuant to Sub-Clause 12.9.2 the Engineer rejects the above named subcontractor being awarded the works package for reasons detailed in the attached review.

Sign : 
 Alan Stevens
 Construction Manager

Date : 25 Apr 2013



Construction Management Agency
Abu Dhabi Airport - Midfield Terminal Complex
AECOM - MTC Site Offices Wing F
PO Box 38811, Abu Dhabi, U.A.E.

Ref: MTC-CMA-TCA-0401-LTR-00383

8 April 2013

Ali Haydar Ozak
Project Director
TCA-JV
P.O. Box 63312
Abu Dhabi
United Arab Emirates



**Contract: AUH.06.10.0401
Midfield Terminal Building**

Subject : Freyssinet Middle East LLC (Post Tension Works) Prequalification Documentation

Dear Sir:

We refer to your Document Submittal ref. PQS/0401/00021 issued on the 02 April 2013 relating to our request for additional prequalification documentation and clarification for Freyssinet Middle East LLC.

Following our review of these documents the issue is deemed to have been satisfactorily addressed and the issue is now closed.

Yours faithfully,



Alan Stevens
Construction Manager
AECOM

cc: Sulaiman Al Siksek
Christopher Jack
Ben Teng
fc/rmi

KIA Headquarters Building Project



SITE TRANSMITTAL

Shop drawings, materials, etc.

Trans. No.

TR-OT-03-001

Revision

0

Date

6/Jan/2013

PROJECT	OWNER	CONSULTANT	CONTRACTOR
KIA Headquarters Building	KIA Investment Authority	KEO International Consultant	First United

We are sending herewith / under separate cover, drawings / documents/samples listed below. (delete as necessary)

ITEM NO.	DRW., SPEC. OR BOQ. REF	GENERAL DESCRIPTION AND REVISION DETAILS	TYPE +	COPIES	ACTION CODE *
1	Div.03-3800	Post-tensioning Sub-contractor Prequalification Documents M/s Freyssinet Kuwait w.l.l.	OT	2	B

We certify that the items submitted herewith have been reviewed in detail and are in strict conformance with the Contract Drawings and Specifications except as otherwise stated.

CONTRACTOR :

TALAL ANDRAOS *[Signature]*

RECEIVED BY KEO



DATE:

6.1.2013

DATE:

KEO'S REMARKS :

No objection subject to compliance with Contract Document requirements such as, but not limited to the following:

- 1) 1.01 - C
- 2) 1.02 - B
- 3) 1.03 - D

KEO Action By :

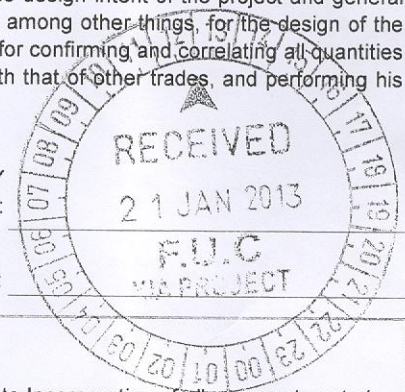
[Signature]

Corrections or a comment made relative to submittals during this review does not relieve the contractor from compliance with the requirements of his contract, drawings and specifications. This review is only in respect of general conformance with the design intent of the project and general compliance with the information given in the Contract documents. The Contractor remains responsible, among other things, for the design of the project or such parts of the project he has design responsibility for (if design forms part of the Contract), for confirming and correlating all quantities and dimensions, selecting fabrication process and techniques of construction, coordinating his work with that of other trades, and performing his work in safe and satisfactory manner, all in accordance with the Contract.

KEO RESIDENT ENGINEER:

[Signature]

RECEIVED BY CONTRACTOR :



DATE:

20/1/2013

DATE:

+ TYPE: SD: Shop Drawings
SM: Sample
GT: Guarantee
MD: Manufacturer's Data
CT: Certificates
OT: Others

* ACTION CODE:
A: No Objection
B: No Objection, Subject to Incorporation of all comments noted
C: Rejected, to be resubmitted.
D: Further Information Required



Over 60 locations worldwide

THE AMERICAS. Argentina . Brazil . Canada . Chile . Colombia . Salvador . United States . Mexico . Panama . Venezuela . EUROPE. Belgium . Bulgaria . Denmark . Spain . Estonia . France . Hungary . Ireland . Iceland . Latvia . Lithuania . Macedonia . Norway . Netherlands . Poland . Portugal . Romania . United Kingdom . Russia . Czech Republic . Serbia . Slovenia . Sweden . Switzerland . Turkey . AFRICA AND MIDDLE EAST. Abu Dhabi . South Africa . Algeria . Saudi Arabia . Dubai . Egypt . Jordan . Kuwait . Morocco . Oman . Qatar . Sharjah . Tunisia . ASIA. South Korea . Hong Kong . India . Indonesia . Japan . Macau . Malaysia . Pakistan . Philippines . Singapore . Taiwan . Thailand . Vietnam . OCEANIA. Australia . New Zealand



FREYSSINET
SUSTAINABLE TECHNOLOGY

www.freysinet.com